



# KAS

KONGU ARTS AND SCIENCE COLLEGE

— TRANSFORM YOURSELF —

## DEPARTMENT OF COMPUTER SCIENCE UG



## CYBERCREWS STUDENTS ASSOCIATION

# 106TH

# Issue

**IT UNLIMITED MAGAZINE A BI-MONTHLY BONANZA  
AUG-SEP 2025**



WWW

KASC.AC.IN



ITUNLIMITEDMAGAZINE@GMAIL.COM

# EDITORIAL BOARD

## **PATRON**

Thiru. P. Sachithanandan

## **Correspondent**

## **EDITORIAL ADVISER**

Dr.H.Vasudevan M.Com., M.Phil., Ph.D., MBA., PGDCA., SLET.,

## **Principal**

## **EDITORIAL IN CHIEF**

Prof.P.Ramesh M.Sc., M.Phil.,

## **HOD**

## **FACULTY EDITOR**

Mr.S.Jaganathan M.C.A., M.Phil.,

## **Assistant Professor**

# STUDENT EDITORS

**Kapil Sanjhiv. A.S**

**Krishnakumar. S**

**Kamesh M**

**Guru Shankar. P.J**

**Dhanusri.U**

**Sri Janani.P**

**G.P. Viswaknithin**

**Abisree. A.P**

**Sasmitha Karthikeyan**

**Anusree.k**

**Sujit**

**Srinith K**

**Dharani S B**

**Dharshini S**

**Subiksha Sundaram**

**Kanishka M**

**III- B.Sc CS-A**

**III- B.Sc CS-A**

**III- B.Sc CS-A**

**III- B.Sc CS With DA**

**III- B.Sc CS With DA**

**III- B.Sc CS With DA**

**II- B.Sc CS-A**

**II- B.Sc CS-A**

**II- B.Sc CS-A**

**II- B.Sc CS-B**

**II- B.Sc CS-B**

**I- B.Sc CS-B**

**I- B.Sc CS-B**

**I- B.Sc CS-B**

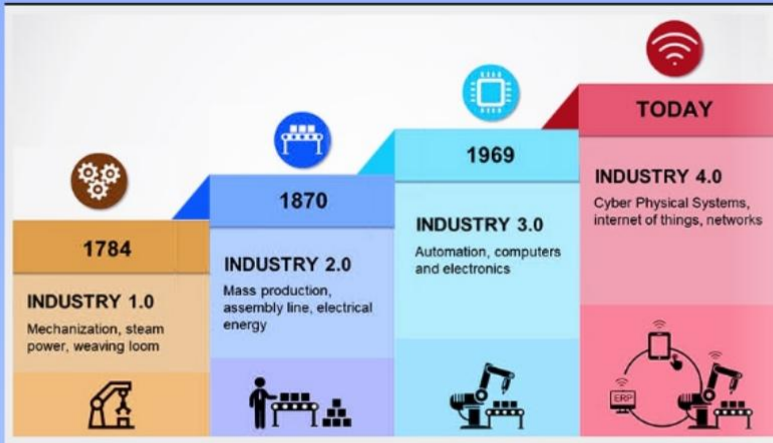
**I- B.Sc CS With DA**

**I- B.Sc CS With DA**

# TABLE OF CONTENTS

<b>1. The Moment Everything Changes</b>	<b>1</b>
<b>2. Human-Like AI Assistants</b>	<b>3</b>
<b>3. Ambient Intelligence</b>	<b>5</b>
<b>4. AI-Driven Cybersecurity</b>	<b>7</b>
<b>5. Big Data Revolution</b>	<b>9</b>
<b>6. Neuromorphic Computing</b>	<b>11</b>
<b>7. Web3 &amp; Decentralization</b>	<b>13</b>
<b>8. Edge AI &amp; Real-Time Intelligence</b>	<b>15</b>
<b>9. Intelligent Tech Ecosystems</b>	<b>17</b>
<b>10. Semiconductor Race</b>	<b>19</b>
<b>11. Learn a Tool</b>	<b>21</b>
<b>12. Review Box</b>	<b>23</b>
<b>13. Mind Punch</b>	<b>25</b>
<b>14. IT Vita</b>	<b>26</b>
<b>15. Answers</b>	<b>27</b>
<b>15. Famous &amp; Favourites</b>	<b>28</b>

# THOUGHTS OF THE ISSUE



## Remember

## Free advice

### PROVIDE TECHNICAL ADVICE

- There are three main areas in which project teams need advice:
  - Understanding the intent and meaning of an organization's policies, procedures, standards and guidelines
  - Determining the best method for using the organization's hardware and software
  - Assessing the impact of the application being developed on other applications currently in operation or under development

When you enter a room and forget what you were going to do



## Just For Fun

## Message

"Just for the record darling, not all positive change feels positive in the beginning."

—S. C. Lourie

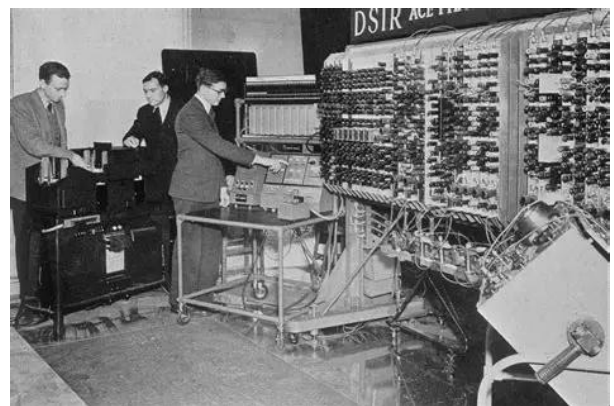
## THE MOMENT EVERYTHING CHANGES

There are rare and defining moments in the history of human civilization when change does not occur gradually but unfolds with such intensity and magnitude that it permanently alters the course of existence itself, reshaping not only the way people live but also how they perceive reality, intelligence, and their place within the universe. From the discovery of fire that gave humanity control over nature, to the industrial revolution that mechanized labor, and later the digital revolution that connected billions across the globe, each transformation has expanded the boundaries of what humans believed to be possible; yet, despite these monumental shifts, one constant remained unchanged—the human mind continued to stand as the most advanced form of intelligence known to existence. Today, however, we are approaching a moment that challenges this very assumption, a moment that is not merely about technological advancement but about redefining intelligence itself, as machines begin to evolve from passive tools into active entities capable of learning, reasoning, adapting, and potentially surpassing human cognitive abilities in ways that were once considered the realm of science fiction.

For decades, computers have operated as extensions of human intention, executing predefined instructions with remarkable precision yet remaining fundamentally limited by the boundaries of their programming, unable to step beyond the logic that was explicitly encoded into them. Even as Artificial Intelligence emerged and evolved, bringing with it the ability to process vast amounts of data, recognize patterns, and perform tasks that would take humans significantly longer, it still remained confined within the domain of narrow intelligence, where each system was designed for a specific purpose and incapable of transferring its knowledge beyond that domain. A machine that could defeat world champions in chess could not drive a vehicle, a system capable of generating human-like text could not

independently conduct scientific reasoning, and an algorithm trained to detect diseases could not understand the emotional or contextual dimensions of human interaction; these limitations, while often overlooked in the face of impressive performance, highlight a critical truth—modern AI, despite its power, does not truly *understand*, it merely processes.

Yet, beneath the surface of these advancements, a deeper transformation has been quietly taking shape, driven by breakthroughs in neural architectures, large-scale data processing, reinforcement learning, and computational power, gradually pushing the boundaries of what machines are capable of achieving. Researchers and technologists across the world are no longer focused solely on improving task-specific systems but are now pursuing a far more ambitious goal—the creation of Artificial General Intelligence, a form of intelligence that is not limited to predefined functions but possesses the ability to learn, adapt, and apply knowledge across diverse domains in a manner that mirrors, and potentially exceeds, human intelligence. This shift represents a fundamental transition from machines that are programmed to machines that can *learn how to learn*, from systems that follow instructions to systems that can generate their own understanding, decisions, and innovations without explicit human guidance.



The implications of such a development are profound and far-reaching, extending beyond the boundaries of computer science into the realms of philosophy, ethics, economics, and human identity itself, as the emergence of AGI raises questions that humanity has never before been forced to confront. If intelligence can be artificially created, what does it mean to be human? If machines can think, reason, and innovate, what distinguishes human cognition from artificial cognition? And perhaps most importantly, how do we ensure that the intelligence we create aligns with the values, intentions, and well-being of the society that created it? These questions are not hypothetical—they are becoming increasingly relevant as AI systems grow more sophisticated, more autonomous, and more integrated into the fabric of everyday life, influencing decisions in healthcare, finance, education, governance, and beyond.

At the same time, the potential benefits of this transformation are equally extraordinary, offering the possibility of solving some of the most complex and persistent challenges facing humanity, from accelerating scientific discovery and advancing medical research to optimizing global systems and addressing environmental crises with unprecedented efficiency and insight. An intelligent system capable of understanding and analyzing vast, interconnected datasets could uncover patterns and solutions that remain invisible to human researchers, enabling breakthroughs that could redefine entire industries and improve the quality of life on a global scale. However, this potential is accompanied by equally significant risks, as the development of systems that can operate independently and make decisions at scale introduces concerns related to control, accountability, and unintended consequences, emphasizing the need for responsible innovation, ethical frameworks, and global cooperation in guiding the development of such technologies.

As we stand at this critical juncture, it becomes increasingly clear that this is not simply another phase in technological evolution but a turning point that challenges

the very foundation of human uniqueness, forcing us to reconsider our relationship with the machines we create and the role they will play in shaping the future of civilization. The transition from narrow artificial intelligence to general intelligence is not just a technical milestone—it is a conceptual leap that redefines intelligence as something that can be engineered, replicated, and potentially enhanced beyond its biological origins. In this sense, the rise of Artificial General Intelligence represents more than innovation; it represents a transformation in the narrative of human progress, where intelligence is no longer an exclusively human trait but a construct that can be designed, developed, and evolved.

This is the moment when everything begins to change, not because machines have become faster or more efficient, but because they are beginning to approach the very essence of what makes intelligence itself, and once that threshold is crossed, the distinction between human and machine intelligence may no longer be defined by capability but by origin, marking the beginning of a new era in which humanity is no longer the sole creator of ideas but shares that role with the very systems it has brought into existence.



## History of Computers



# THE RACE FOR HUMAN-LIKE AI ASSISTANTS

In the rapidly evolving landscape of modern computing, the race to develop human-like artificial intelligence assistants has intensified to a level where technology companies are no longer competing merely on performance metrics or feature sets, but are instead striving to redefine the very nature of human-computer interaction by creating systems that can seamlessly integrate into daily life as intelligent, adaptive, and context-aware entities capable of understanding, reasoning, and acting with a level of sophistication that closely mirrors human cognition. What began as simple voice-command systems designed to perform basic tasks such as setting reminders or retrieving information has now transformed into a complex ecosystem of AI-driven platforms that leverage advanced neural network architectures, large-scale language models, multimodal processing capabilities, and continuous learning mechanisms to deliver highly personalized and dynamic user experiences that evolve over time. Organizations across the globe, including major industry leaders and emerging startups, are investing unprecedented resources into the development of next-generation AI assistants that can not only respond to user queries but also anticipate needs, manage workflows, generate creative content, assist in software development, analyze data, and even participate in strategic decision-making processes, effectively positioning themselves as indispensable digital collaborators rather than passive tools.

At the core of this transformation lies the integration of large language models with multimodal intelligence, enabling AI systems to process and interpret information across multiple forms of input, including text, speech, images, and real-time environmental data, thereby allowing them to understand context in a far more comprehensive manner than previous generations of software. This capability is further enhanced by the introduction of persistent memory architectures, which allow AI assistants to retain information about user preferences,

behavioral patterns, and historical interactions, creating a continuous and evolving relationship between the user and the system that closely resembles human memory and learning processes. As a result, these assistants are no longer limited to isolated interactions but are capable of maintaining long-term context, enabling them to provide more relevant, accurate, and personalized responses that improve with each interaction.



Another significant advancement in this domain is the development of autonomous task execution, where AI assistants are designed to not only provide information but also take action on behalf of the user, such as scheduling meetings, sending communications, managing digital environments, and coordinating complex workflows across multiple platforms and applications. This shift from reactive to proactive functionality represents a fundamental change in how software operates, as systems are increasingly capable of initiating actions based on predictive analysis and contextual understanding rather than waiting for explicit instructions. Furthermore, the integration of AI assistants into enterprise environments is transforming organizational productivity by automating routine tasks, enhancing collaboration, and enabling more efficient decision-making processes, thereby reducing operational overhead and allowing human

workers to focus on higher-level strategic and creative activities.

However, the rapid advancement of human-like AI assistants also introduces a range of critical challenges and considerations that must be addressed to ensure responsible and sustainable development. One of the most pressing concerns is the issue of data privacy, as the effectiveness of these systems relies heavily on their ability to access and analyze large volumes of personal and organizational data, raising questions about how this information is collected, stored, and utilized. Ensuring robust security measures and transparent data governance frameworks is essential to prevent misuse and protect user trust. Additionally, the increasing autonomy of AI systems raises ethical questions regarding accountability and decision-making authority, particularly in scenarios where AI-generated actions may have significant real-world consequences



The societal implications of this technological shift are equally profound, as the widespread adoption of advanced AI assistants has the potential to reshape the nature of work, communication, and human interaction. While these systems offer significant benefits in terms of efficiency and convenience, they also raise concerns about dependency, skill erosion, and the potential displacement of certain job roles, highlighting the need for continuous adaptation and skill development in an increasingly AI-driven world. At the same time, the democratization of access to advanced AI capabilities is enabling individuals and organizations of all sizes to

leverage powerful tools that were previously limited to large enterprises, fostering innovation and creating new opportunities across a wide range of industries.

Looking ahead, the trajectory of AI assistant development suggests a future in which digital intelligence becomes deeply embedded within the fabric of everyday life, functioning not as a separate layer of technology but as an integral component of human experience that enhances cognitive capabilities, supports decision-making, and facilitates seamless interaction with complex digital ecosystems. As research continues to push the boundaries of what is possible, the distinction between human and machine intelligence is likely to become increasingly blurred, leading to a new paradigm in which collaboration between humans and AI systems becomes the foundation of productivity, creativity, and innovation. In this emerging landscape, the true measure of success will not be defined solely by technological advancement but by the ability to align these powerful systems with human values, ensuring that the evolution of artificial intelligence contributes positively to society and supports the continued growth and well-being of humanity as a whole.

# THE INVISIBLE REVOLUTION OF AMBIENT INTELLIGENCE

As the digital world continues to evolve beyond screens, keyboards, and explicit human commands, a quieter yet profoundly transformative revolution is taking place in the background of everyday life, one that is redefining how humans interact with technology by embedding intelligence directly into the environment itself, creating systems that are not only responsive but also anticipatory, adaptive, and contextually aware without requiring conscious interaction. This paradigm, known as ambient intelligence, represents a shift away from traditional computing models where users actively engage with devices, toward a future where technology becomes seamlessly integrated into the physical world, operating invisibly and intuitively to enhance human experiences in ways that feel natural, effortless, and almost instinctive. At its core, ambient intelligence is driven by the convergence of multiple advanced technologies, including artificial intelligence, the Internet of Things, edge computing, sensor networks, and real-time data analytics, all working together to create environments that can perceive human presence, interpret behavior, and respond dynamically to changing conditions.

Unlike conventional systems that rely on direct input, ambient intelligence systems are designed to continuously observe and analyze contextual information such as location, movement, environmental conditions, user preferences, and behavioral patterns, enabling them to make informed decisions and initiate actions without explicit instructions. For instance, a smart living space equipped with ambient intelligence can automatically adjust lighting, temperature, and sound based on the time of day, occupancy, and even the emotional state inferred from user behavior, creating a personalized environment that adapts in real time to individual needs. Similarly, in workplace settings, ambient systems can optimize resource allocation, enhance collaboration, and improve productivity by intelligently managing spaces, devices, and workflows based on real-time

data and predictive insights, reducing the need for manual intervention and enabling more efficient operations.

One of the most significant advancements enabling ambient intelligence is the proliferation of interconnected devices and sensors that generate vast amounts of data, which are then processed using advanced machine learning algorithms to extract meaningful patterns and insights. Edge computing plays a crucial role in this ecosystem by allowing data to be processed locally, closer to the source, thereby reducing latency and ensuring faster response times, which is particularly important in applications that require real-time decision-making, such as healthcare monitoring, autonomous systems, and smart infrastructure. The integration of natural language processing and voice recognition further enhances the user experience by enabling seamless communication between humans and intelligent environments, allowing users to interact with systems in a more intuitive and conversational manner without relying on traditional interfaces.



The applications of ambient intelligence extend across a wide range of domains, each benefiting from its ability to create more responsive and adaptive environments. In healthcare, ambient systems are being used to monitor patients continuously, detecting anomalies in vital signs and alerting medical professionals in real time, thereby improving patient outcomes and reducing the burden on healthcare providers. In smart cities, ambient

intelligence is transforming urban infrastructure by optimizing traffic flow, managing energy consumption, and enhancing public safety through the integration of intelligent sensors and predictive analytics. Retail environments are leveraging ambient systems to personalize customer experiences, using data-driven insights to tailor recommendations, optimize store layouts, and improve overall engagement. Even in education, ambient intelligence is being explored as a means to create adaptive learning environments that respond to student behavior, adjusting content delivery and pacing to enhance understanding and retention.

Despite its immense potential, the widespread adoption of ambient intelligence also raises significant challenges and concerns that must be carefully addressed to ensure its responsible implementation. Privacy is one of the most critical issues, as the continuous collection and analysis of data required for ambient systems to function effectively can lead to concerns about surveillance, data ownership, and unauthorized access to sensitive information. Ensuring robust security measures and transparent data governance frameworks is essential to maintain user trust and prevent misuse. Additionally, the complexity of integrating multiple technologies into a cohesive and reliable system presents technical challenges related to interoperability, scalability, and system maintenance, requiring ongoing innovation and standardization efforts to overcome these barriers.

From a societal perspective, the rise of ambient intelligence represents a fundamental shift in the relationship between humans and technology, as it moves from being a tool that is actively used to a pervasive presence that operates in the background, shaping experiences and influencing behavior in subtle yet powerful ways. This transition has the

potential to enhance quality of life by reducing cognitive load, improving efficiency, and enabling more personalized experiences, but it also raises important questions about autonomy, dependency, and the extent to which individuals are willing to relinquish control to intelligent systems. As these technologies continue to evolve, it becomes increasingly important to strike a balance between convenience and control, ensuring that users retain the ability to understand, manage, and override the systems that influence their environment.

Looking ahead, the future of ambient intelligence is likely to be defined by deeper integration with emerging technologies such as augmented reality, wearable computing, and advanced AI models capable of more sophisticated reasoning and contextual understanding, leading to environments that are not only reactive but also predictive and proactive in addressing human needs. As these systems become more advanced and widespread, they have the potential to transform not only individual experiences but also entire industries and societal structures, creating a world where technology is no longer something we interact with directly but something that surrounds us, supports us, and evolves alongside us in a continuous and seamless manner. In this new paradigm, the true innovation lies not in the devices themselves but in the invisible intelligence that connects them, orchestrating a harmonious interaction between humans and their environment in a way that feels both



# THE SILENT WAR: CYBERSECURITY IN THE AGE OF AI-DRIVEN THREATS

In the rapidly expanding digital ecosystem where every device, application, and service is interconnected through complex networks, cybersecurity has evolved from a defensive necessity into a continuous, high-stakes battlefield where attackers and defenders engage in an invisible yet relentless war powered increasingly by artificial intelligence, automation, and advanced computational strategies, fundamentally transforming the nature of digital threats and the methods used to combat them. Unlike traditional cyber threats that relied on manual exploitation, predictable attack patterns, and limited scalability, modern cyberattacks have become highly sophisticated, adaptive, and intelligent, leveraging AI-driven techniques to automate reconnaissance, generate highly convincing phishing campaigns, bypass security mechanisms, and exploit vulnerabilities at a speed and scale that far exceed human capabilities, thereby creating an environment in which traditional rule-based security systems are no longer sufficient to ensure protection. One of the most alarming developments in this domain is the rise of AI-generated attacks, where malicious actors utilize machine learning models to analyze vast datasets of user behavior, communication patterns, and system vulnerabilities in order to craft highly personalized and context-aware attacks that are significantly more difficult to detect, such as spear-phishing emails that mimic real communication styles, deepfake audio and video impersonations that can deceive even experienced professionals, and intelligent malware that can dynamically alter its behavior to evade detection by security systems.

At the same time, defenders are also leveraging artificial intelligence to strengthen cybersecurity frameworks, leading to an ongoing arms race between offensive and defensive technologies in which both sides continuously evolve to outmaneuver each other. Modern cybersecurity systems now

incorporate AI-driven threat detection mechanisms capable of analyzing network traffic, user behavior, and system logs in real time to identify anomalies that may indicate potential security breaches, enabling organizations to respond proactively rather than reactively. Behavioral analytics has become a key component of these systems, allowing security platforms to establish baseline patterns of normal activity and detect deviations that could signal unauthorized access, insider threats, or malicious activities, thereby improving the accuracy and efficiency of threat detection. Furthermore, the adoption of zero-trust security models, which operate on the principle of “never trust, always verify,” has introduced a more robust approach to access control, ensuring that every user and device is continuously authenticated and authorized regardless of their location within the network, thereby reducing the risk of unauthorized access and lateral movement within systems.



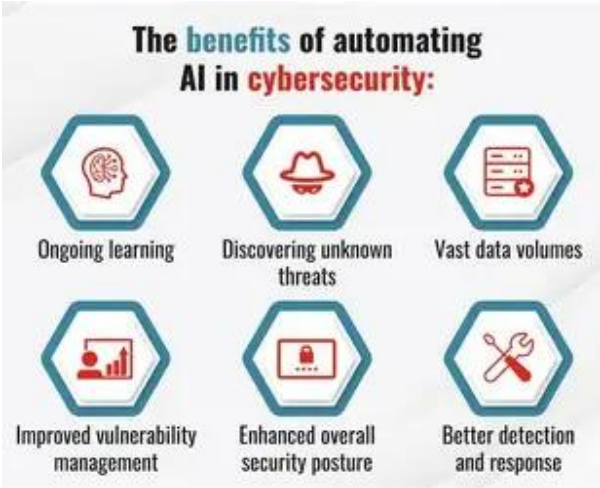
Another critical aspect of modern cybersecurity is the increasing importance of data protection and privacy, as the exponential growth of data generation and storage has created new challenges in safeguarding sensitive information from unauthorized access and breaches. Encryption technologies, secure communication protocols, and advanced authentication mechanisms such as

biometrics and multi-factor authentication are being implemented to enhance data security, while regulatory frameworks and compliance standards are evolving to address the complexities of data governance in a global digital environment. However, despite these advancements, the human factor remains one of the weakest links in cybersecurity, as social engineering attacks continue to exploit human psychology rather than technical vulnerabilities, highlighting the need for continuous awareness, education, and training to strengthen the overall security posture of organizations and individuals.

The implications of this ongoing cyber warfare extend beyond individual organizations and impact entire societies, as critical infrastructure systems such as power grids, transportation networks, healthcare systems, and financial institutions become increasingly reliant on digital technologies, making them potential targets for large-scale cyberattacks that could disrupt essential services and compromise national security. Governments and international organizations are therefore investing heavily in cybersecurity initiatives, developing strategies to enhance resilience, promote collaboration, and establish frameworks for responding to cyber threats at a global level. At the same time, ethical considerations are becoming increasingly important, as the use of AI in cybersecurity raises questions about surveillance, privacy, and the potential misuse of advanced technologies for malicious purposes.

Looking ahead, the future of cybersecurity will be shaped by the continued integration of artificial intelligence, quantum-resistant cryptography, and decentralized security architectures, leading to the development of more adaptive, intelligent, and resilient systems capable of defending against increasingly sophisticated threats. However, as technology continues to evolve, so too will the tactics of cybercriminals, ensuring that cybersecurity remains a dynamic and ever-changing field that requires constant vigilance, innovation, and collaboration to maintain the

integrity and security of the digital world. In this silent war, there are no final victories, only ongoing battles, and the ability to anticipate, adapt, and respond to emerging threats will determine the balance between security and vulnerability in the interconnected systems that define modern society.



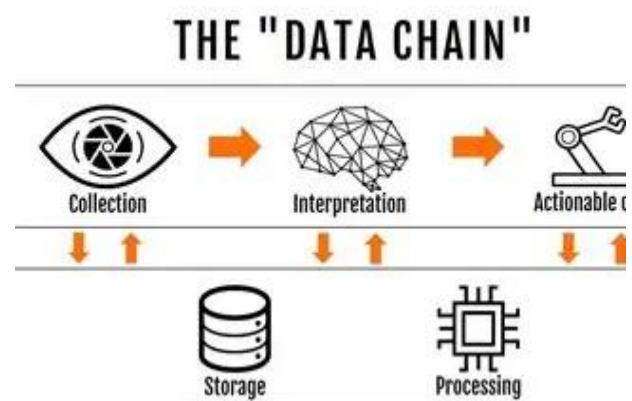
# THE DATA REVOLUTION: HOW BIG DATA IS RESHAPING THE DIGITAL WORLD

In the modern era of computing, where every interaction, transaction, and digital footprint contributes to an ever-expanding ocean of information, data has emerged not merely as a byproduct of technological systems but as a foundational resource that is actively driving innovation, decision-making, and competitive advantage across industries, giving rise to what is now widely recognized as the data revolution. This transformation is characterized by the unprecedented scale, speed, and diversity of data generation, fueled by the proliferation of connected devices, social media platforms, cloud services, enterprise systems, and sensor networks that continuously produce massive volumes of structured and unstructured data, creating both opportunities and challenges for organizations seeking to extract meaningful insights and derive value from this information. Unlike traditional data processing approaches, which were limited by storage capacity, computational power, and analytical capabilities, modern big data technologies leverage distributed computing frameworks, scalable storage solutions, and advanced analytics to process and analyze data at a scale that was previously unimaginable, enabling organizations to uncover patterns, trends, and correlations that can inform strategic decisions and drive innovation.



At the core of the data revolution lies the concept of big data analytics, which involves the use of sophisticated algorithms, machine learning models, and statistical techniques to analyze large datasets and generate actionable

insights that can be applied across a wide range of applications, from business intelligence and customer behavior analysis to scientific research and predictive modeling. One of the key features of big data systems is their ability to handle the three fundamental characteristics often referred to as the “three Vs” of big data: volume, velocity, and variety, which represent the massive scale of data, the rapid speed at which it is generated and processed, and the diverse range of data types and sources that must be integrated and analyzed. In addition to these core attributes, modern data systems also emphasize veracity and value, ensuring that data is accurate, reliable, and capable of delivering meaningful insights that can drive informed decision-making.



The applications of big data are vast and transformative, impacting nearly every sector of the economy and society. In healthcare, data analytics is being used to improve patient outcomes by enabling personalized treatment plans, early disease detection, and predictive healthcare models that can anticipate medical conditions before they become critical. In finance, big data is driving advancements in fraud detection, risk management, and algorithmic trading, allowing institutions to analyze market trends and make real-time decisions with greater accuracy. In the retail sector, organizations are leveraging customer data to personalize shopping experiences, optimize inventory management, and enhance

marketing strategies, while in transportation and logistics, data-driven systems are improving route optimization, reducing operational costs, and enhancing overall efficiency.



Despite its immense potential, the data revolution also presents significant challenges that must be addressed to ensure its effective and responsible use. One of the primary concerns is data privacy, as the collection and analysis of large volumes of personal and sensitive information raise questions about how data is stored, accessed, and protected from unauthorized use. Ensuring compliance with data protection regulations and implementing robust security measures are essential to maintaining trust and safeguarding user information. Additionally, the complexity of managing and processing large datasets requires specialized skills and infrastructure, creating a demand for skilled professionals in data science, data engineering, and analytics, as well as advanced tools and platforms capable of handling the scale and complexity of modern data systems.

Another critical challenge is the issue of data quality, as the accuracy and reliability of insights derived from data are directly dependent on the quality of the data itself. Inaccurate, incomplete, or biased data can lead to misleading conclusions and poor decision-making, highlighting the importance of data governance, validation, and cleansing processes in ensuring the integrity of data-

driven systems. Furthermore, the ethical implications of data usage must be carefully considered, particularly in areas such as surveillance, targeted advertising, and algorithmic decision-making, where the misuse of data can have significant social and ethical consequences.

Looking toward the future, the data revolution is expected to continue evolving as new technologies and methodologies emerge, further enhancing the ability to collect, process, and analyze data in real time. The integration of artificial intelligence and machine learning with big data analytics is enabling the development of more advanced predictive and prescriptive models, while the adoption of edge computing is allowing data to be processed closer to its source, reducing latency and enabling faster decision-making. Additionally, advancements in data visualization and user interfaces are making it easier for individuals and organizations to interpret complex data and derive actionable insights, democratizing access to data-driven decision-making capabilities.



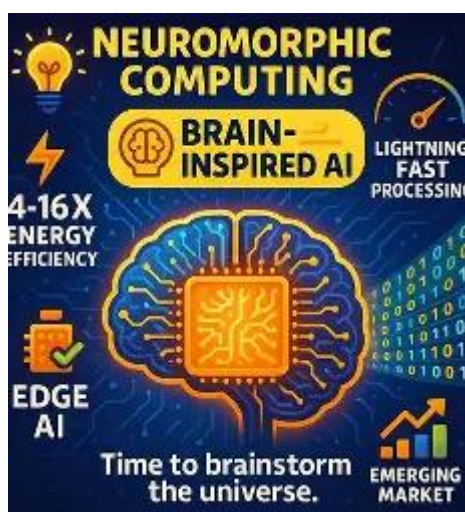
As the digital world becomes increasingly data-centric, the ability to harness the power of data will be a key determinant of success in the modern economy, shaping the way organizations operate, compete, and innovate in an ever-changing technological landscape.

# THE FUTURE OF COMPUTING: NEUROMORPHIC CHIPS AND BRAIN-INSPIRED ARCHITECTURES

As the limitations of traditional computing architectures become increasingly evident in the face of growing demands for efficiency, scalability, and intelligent processing, researchers and technology innovators are turning toward an unconventional yet highly promising approach that draws direct inspiration from the most powerful computing system known to humanity—the human brain—giving rise to the field of neuromorphic computing, which aims to design hardware and systems that mimic the structure, functionality, and adaptive capabilities of biological neural networks in order to achieve unprecedented levels of efficiency, learning capability, and real-time processing. Unlike conventional computing systems that rely on the separation of memory and processing units, resulting in significant energy consumption and latency due to constant data transfer, neuromorphic architectures integrate memory and computation in a manner similar to neurons and synapses in the brain, enabling systems to process information in a highly parallel, event-driven, and energy-efficient manner that is fundamentally different from the sequential processing model of traditional von Neumann architectures.

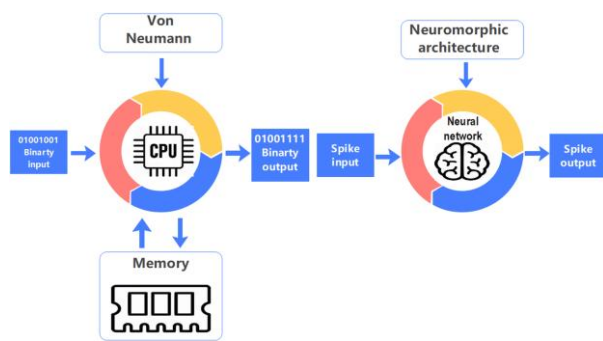
these systems to perform computations through the dynamic interaction of interconnected components that can adapt and evolve based on input stimuli, much like biological neural systems. These chips are designed to process information using spikes—discrete signals that represent changes in state—rather than continuous data streams, enabling them to operate with significantly lower power consumption while maintaining high levels of performance, particularly in tasks that involve pattern recognition, sensory processing, and real-time decision-making. This approach not only enhances computational efficiency but also enables systems to learn directly from data without relying on traditional training methods that require extensive computational resources and large datasets, thereby opening new possibilities for on-device learning and adaptive intelligence.

The development of neuromorphic chips is being actively pursued by leading technology companies and research institutions, with notable advancements including the creation of specialized processors that can simulate millions of neurons and billions of synaptic connections, enabling complex computations that were previously impractical with conventional hardware. These systems are particularly well-suited for applications in robotics, autonomous systems, and edge computing, where the ability to process information quickly and efficiently in real time is critical. For example, neuromorphic processors can enable robots to perceive and respond to their environment with a level of adaptability and efficiency that closely resembles biological organisms, allowing them to navigate complex environments, recognize patterns, and make decisions with minimal energy consumption. In the field of healthcare, these systems have the potential to revolutionize medical devices by enabling real-time monitoring and analysis of biological signals, leading to more accurate



At the core of neuromorphic computing lies the concept of artificial neurons and synapses implemented directly in hardware, allowing

diagnostics and personalized treatment strategies.



Another significant advantage of neuromorphic computing is its potential to overcome the energy limitations of traditional AI systems, which often require massive data centers and significant power consumption to train and deploy complex models. By mimicking the efficiency of the human brain, which operates on a fraction of the energy used by modern computing systems, neuromorphic architectures offer a sustainable alternative that can support the growing demand for intelligent processing without contributing to excessive energy consumption. This is particularly important in the context of edge devices and Internet of Things ecosystems, where power efficiency and real-time processing are critical factors in enabling widespread adoption and scalability.

Despite its promising potential, the field of neuromorphic computing is still in its early stages, facing several challenges that must be addressed to achieve widespread implementation and integration into existing computing ecosystems. One of the primary challenges is the development of programming models and software frameworks that can effectively leverage the unique capabilities of neuromorphic hardware, as traditional programming paradigms are not well-suited to this new approach. Additionally, the complexity of designing and manufacturing neuromorphic chips presents significant technical hurdles, requiring advancements in materials science, fabrication techniques, and system integration to ensure reliability and scalability.

From a broader perspective, the emergence of neuromorphic computing represents a fundamental shift in how we conceptualize and design computing systems, moving away from rigid, deterministic architectures toward more flexible, adaptive, and biologically inspired models that can learn and evolve over time. This transition has the potential to redefine the boundaries of artificial intelligence, enabling the development of systems that are not only more efficient but also more capable of understanding and interacting with the world in a manner that closely resembles human cognition. As research continues to advance and new breakthroughs are achieved, neuromorphic computing may play a critical role in shaping the future of intelligent systems, providing a foundation for technologies that are capable of operating with unprecedented levels of efficiency, adaptability, and autonomy.



In the long term, the integration of neuromorphic architectures with other emerging technologies such as quantum computing, edge intelligence, and advanced AI models could lead to the creation of hybrid systems that combine the strengths of multiple computing paradigms, unlocking new possibilities for innovation and problem-solving across a wide range of domains.

# THE NEW INTERNET: WEB3, DECENTRALIZATION, AND THE SHIFT OF DIGITAL POWER

As the internet continues to evolve beyond its original design as a static information-sharing platform into a dynamic and interactive ecosystem that underpins nearly every aspect of modern life, a fundamental transformation is emerging in the form of Web3, a decentralized paradigm that seeks to redefine the ownership, control, and governance of digital systems by shifting power away from centralized entities and redistributing it across users, developers, and distributed networks, thereby challenging the long-standing dominance of large technology corporations and introducing a new model of digital interaction that emphasizes transparency, trustlessness, and user sovereignty. Unlike the traditional web architecture, often referred to as Web2, where data is stored and controlled by centralized platforms that act as intermediaries between users and services, Web3 is built upon blockchain technology and decentralized protocols that enable peer-to-peer interactions without the need for a central authority, allowing users to retain control over their data, digital identities, and assets while participating in a more open and inclusive digital economy.



At the heart of Web3 lies the concept of decentralization, which eliminates single points of control and failure by distributing data and computational processes across a network of nodes, each maintaining a copy of

the system's state and participating in consensus mechanisms that ensure the integrity and consistency of transactions. This approach not only enhances security and resilience but also introduces a level of transparency that is fundamentally different from traditional systems, as all transactions and interactions are recorded on immutable ledgers that can be independently verified by any participant in the network. Smart contracts play a crucial role in this ecosystem, serving as self-executing programs that automatically enforce agreements and facilitate transactions without the need for intermediaries, thereby reducing costs, increasing efficiency, and enabling new forms of digital interaction that were previously not possible.

One of the most transformative aspects of Web3 is its impact on digital ownership, particularly through the use of non-fungible tokens and tokenized assets, which allow users to own, trade, and monetize digital content in a manner that is verifiable, secure, and independent of centralized platforms. This has led to the emergence of new economic models and opportunities, particularly in areas such as digital art, gaming, and content creation, where creators can directly engage with their audiences and retain a greater share of the value generated by their work. Additionally, decentralized finance platforms are redefining traditional financial systems by enabling users to access financial services such as lending, borrowing, and trading without relying on banks or other intermediaries, thereby increasing accessibility and reducing barriers to entry.

However, despite its potential to democratize the internet and empower users, Web3 also faces significant challenges that must be addressed to achieve widespread adoption and long-term sustainability. Scalability remains a major concern, as many blockchain networks struggle to handle large volumes of

transactions efficiently, leading to issues such as high transaction fees and slow processing times. Additionally, the complexity of decentralized systems can create barriers for users who are not familiar with the underlying technologies, highlighting the need for more intuitive interfaces and user-friendly applications. Security is another critical issue, as vulnerabilities in smart contracts and decentralized applications can be exploited by malicious actors, resulting in financial losses and undermining trust in the ecosystem.



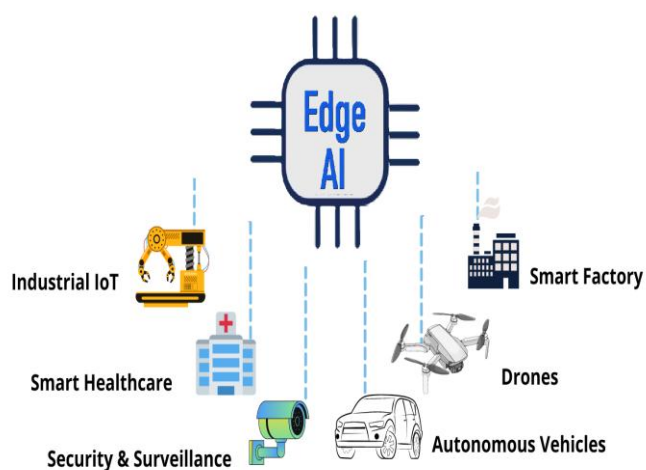
**Web 3.0**  
read-write-trust  
verifiable

From a regulatory perspective, the decentralized nature of Web3 presents unique challenges for governments and policymakers, as traditional regulatory frameworks are often not well-suited to address the complexities of distributed systems and digital assets that operate across borders. Balancing innovation with regulation is essential to ensure that the benefits of Web3 can be realized while minimizing risks related to fraud, money laundering, and market manipulation. At the same time, environmental concerns related to the energy consumption of certain blockchain technologies have prompted the development of more sustainable consensus mechanisms and energy-efficient solutions that aim to reduce the ecological impact of decentralized systems.

In this context, Web3 represents more than just a technological advancement; it embodies a shift in the philosophy of the internet itself, moving from a model of centralized control to one of distributed ownership and collective participation, where users are no longer passive consumers of content but active participants in the creation, governance, and evolution of digital ecosystems. This transformation has the potential to redefine the balance of power in the digital age, creating opportunities for greater inclusivity, innovation, and resilience, while also presenting new challenges that require careful consideration and collaborative effort to address. As the internet continues to evolve, the principles of decentralization, transparency, and user sovereignty that underpin Web3 may play a crucial role in shaping the future of digital interaction, offering a vision of an internet that is more open, equitable, and aligned with the needs and values of its users.

# THE NEXT COMPUTING FRONTIER: EDGE AI AND REAL-TIME INTELLIGENCE

As the digital ecosystem expands at an unprecedented pace, driven by billions of interconnected devices, sensors, and intelligent systems continuously generating vast streams of data, a fundamental shift is occurring in the way computation is performed, moving away from centralized cloud infrastructures toward a more distributed paradigm known as edge computing, where data processing and intelligence are brought closer to the source of data generation in order to enable faster, more efficient, and real-time decision-making capabilities that are critical for modern applications. This transformation is further accelerated by the integration of artificial intelligence at the edge, giving rise to what is now widely recognized as Edge AI, a technological approach that combines the power of machine learning algorithms with localized computing resources to create systems that are capable of analyzing data, making decisions, and executing actions instantly without relying on distant cloud servers, thereby significantly reducing latency, bandwidth usage, and dependency on continuous network connectivity.



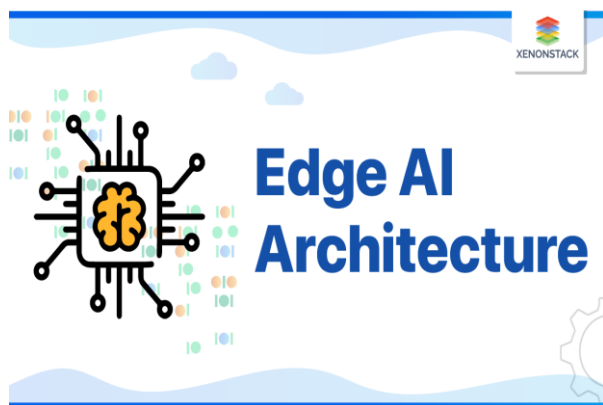
Unlike traditional cloud-based AI systems that require data to be transmitted to centralized servers for processing, which can introduce delays and potential security risks, Edge AI systems operate directly on devices such as

smartphones, IoT sensors, autonomous vehicles, industrial machines, and wearable technologies, enabling them to process data in real time and respond immediately to changing conditions. This capability is particularly important in applications where even a slight delay can have significant consequences, such as in autonomous driving, where vehicles must analyze their surroundings and make split-second decisions to ensure safety, or in healthcare monitoring systems, where real-time analysis of patient data can be critical for detecting emergencies and providing timely interventions. By processing data locally, Edge AI not only enhances performance but also improves privacy, as sensitive information does not need to be transmitted to external servers, reducing the risk of data breaches and unauthorized access.

At the core of Edge AI lies the development of specialized hardware and software architectures designed to support efficient on-device computation, including lightweight machine learning models, optimized neural networks, and dedicated AI accelerators that enable devices to perform complex computations with limited resources and power consumption. Advances in semiconductor technology have led to the creation of highly efficient chips that can execute AI workloads directly on edge devices, enabling real-time inference and decision-making capabilities that were previously only possible in large-scale data centers. Additionally, techniques such as model compression, quantization, and federated learning are being employed to optimize the performance of AI models for edge environments, allowing them to operate effectively within the constraints of limited processing power, memory, and energy availability.

The applications of Edge AI are vast and continue to expand across various domains,

transforming industries and enabling new possibilities for innovation and efficiency. In the field of smart cities, Edge AI is being used to optimize traffic management, monitor environmental conditions, and enhance public safety through real-time analysis of data from sensors and surveillance systems. In industrial settings, Edge AI enables predictive maintenance by analyzing data from machinery to detect anomalies and predict potential failures before they occur, thereby reducing downtime and improving operational efficiency. In consumer technology, Edge AI powers features such as voice recognition, facial recognition, and personalized recommendations on devices like smartphones and smart home systems, providing users with more responsive and intelligent experiences. Furthermore, in the domain of agriculture, Edge AI is being used to monitor crop health, optimize irrigation, and improve yield through real-time analysis of environmental data.



Despite its numerous advantages, the adoption of Edge AI also presents several challenges that must be addressed to fully realize its potential. One of the primary challenges is the complexity of developing and deploying AI models that can operate efficiently on resource-constrained devices, requiring advancements in model optimization techniques and hardware design. Additionally, ensuring the security and reliability of edge devices is critical, as these systems are often distributed across various locations and may be more vulnerable to physical and cyber threats. Managing and updating AI models

across a large number of edge devices also presents logistical challenges, necessitating the development of robust management and orchestration frameworks that can ensure consistency and performance across the network.

From a broader perspective, the rise of Edge AI represents a significant shift in the architecture of modern computing systems, moving toward a more decentralized and distributed model that aligns with the growing demand for real-time intelligence and localized decision-making. This shift not only enhances the performance and efficiency of AI systems but also enables new applications and use cases that were previously not feasible with centralized computing approaches. As the number of connected devices continues to grow and the demand for intelligent processing increases, Edge AI is expected to play a critical role in shaping the future of technology, enabling systems that are more responsive, adaptive, and capable of operating autonomously in dynamic environments.

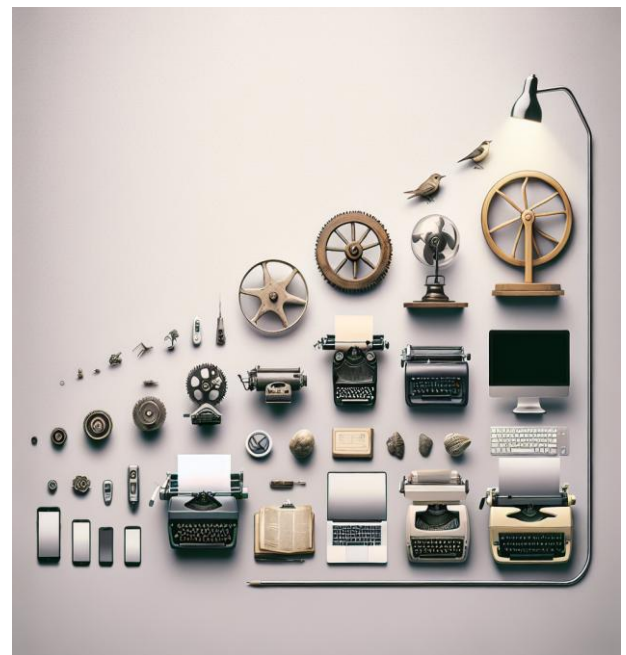
Looking ahead, the integration of Edge AI with emerging technologies such as 5G and future 6G networks, advanced sensor technologies, and autonomous systems is likely to further accelerate its adoption and impact, creating a new generation of intelligent systems that can operate seamlessly across distributed environments while maintaining high levels of performance and efficiency. This convergence of technologies has the potential to redefine the way data is processed, analyzed, and utilized, enabling a more intelligent and connected world where decisions are made in real time, closer to where data is generated, and where technology becomes an integral part of the physical environment, supporting and enhancing human activities in ways that are both powerful and transformative.

# THE GLOBAL TECH SHIFT: FROM SMART DEVICES TO INTELLIGENT ECOSYSTEMS

In the current phase of technological evolution, the focus of innovation is no longer confined to the development of isolated devices or standalone software applications, but is instead rapidly shifting toward the creation of interconnected intelligent ecosystems in which hardware, software, artificial intelligence, cloud infrastructure, and user data operate in seamless coordination to deliver highly personalized, adaptive, and context-aware digital experiences that extend across multiple domains of everyday life. This transformation is clearly visible in the strategies adopted by leading technology companies, which are increasingly designing their products and services not as independent offerings but as components of a larger integrated ecosystem where smartphones, wearables, smart home devices, cloud platforms, and AI assistants work together to create a unified and continuous user experience that evolves dynamically based on user behavior, preferences, and environmental context. Modern smartphones, for instance, are no longer just communication devices but serve as central hubs that connect and control a wide range of technologies, including smartwatches that monitor health metrics in real time, wireless earbuds that adapt audio output based on surroundings, and home automation systems that adjust lighting, temperature, and security settings automatically, demonstrating how multiple technologies are converging to form a cohesive digital environment.

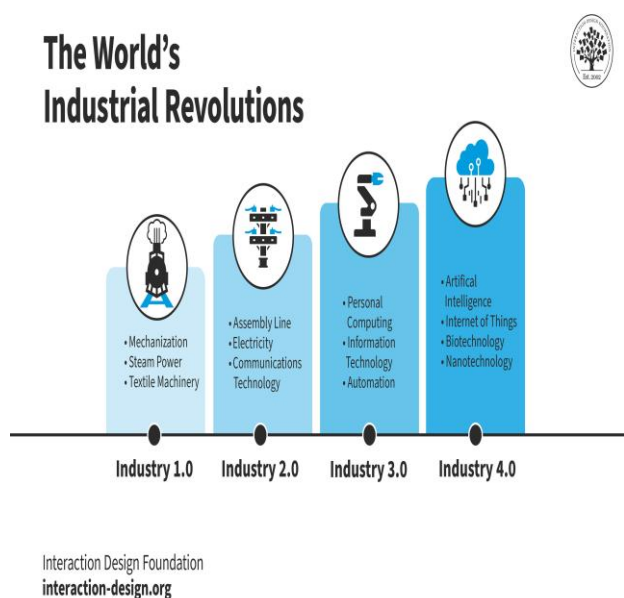
At the same time, the rapid advancement of cloud computing and edge technologies is enabling these ecosystems to function with greater efficiency and responsiveness, as data generated by devices is processed both locally and in distributed cloud infrastructures to provide real-time insights and actions without noticeable delays, thereby enhancing performance while maintaining scalability. Artificial intelligence plays a critical role in

orchestrating these ecosystems by analyzing vast amounts of data generated by interconnected devices and using machine learning algorithms to predict user needs, automate tasks, and optimize system performance, effectively transforming technology from a reactive tool into a proactive assistant that anticipates and responds to user requirements. For example, modern operating systems are increasingly incorporating AI-driven features that can suggest actions, manage resources, and even automate complex workflows based on usage patterns, while enterprise systems are leveraging similar technologies to optimize operations, improve decision-making, and enhance productivity across organizations.



Another significant development within this ecosystem-driven approach is the increasing emphasis on cross-platform integration and interoperability, as users demand seamless experiences across different devices and services regardless of the manufacturer or platform, leading to the adoption of standardized protocols and collaborative

frameworks that enable different technologies to communicate and function together effectively. This trend is particularly evident in the integration of services such as cloud storage, streaming platforms, and collaborative tools, which allow users to access and manage their data and applications across multiple devices without interruption, thereby creating a more flexible and user-centric digital environment. Additionally, advancements in connectivity technologies such as 5G are further accelerating this transformation by providing the high-speed, low-latency networks required to support real-time communication and data exchange between devices, enabling more complex and interactive applications such as augmented reality, remote collaboration, and smart infrastructure.



However, the transition toward intelligent ecosystems also introduces a range of challenges that must be addressed to ensure their effective and secure operation, including concerns related to data privacy, security, and system reliability, as the increased interconnectivity of devices creates new vulnerabilities that can be exploited if not properly managed. Ensuring that data is protected and that systems are resilient against potential threats requires the implementation of robust security measures, including encryption, authentication, and continuous

monitoring, as well as the development of regulatory frameworks that address the complexities of data governance in a highly interconnected environment. Furthermore, the reliance on interconnected systems raises questions about dependency and control, as users become increasingly reliant on technology to manage various aspects of their lives, highlighting the need for transparency and user empowerment in the design and implementation of these systems.



Looking ahead, the evolution of intelligent ecosystems is expected to continue as emerging technologies such as artificial intelligence, the Internet of Things, and advanced connectivity converge to create even more sophisticated and integrated digital environments that extend beyond individual devices to encompass entire cities, industries, and societies. This shift represents a fundamental change in the way technology is developed and utilized, moving from a focus on individual products to a holistic approach that emphasizes integration, collaboration, and user-centric design, ultimately leading to a future where technology is not just a collection of tools but a cohesive system that enhances and supports human activities in a seamless and intuitive manner.

# THE CHIP WAR: HOW SEMICONDUCTOR RACE IS SHAPING THE FUTURE OF TECHNOLOGY

In the modern technological landscape, where every digital innovation—from artificial intelligence and cloud computing to smartphones, electric vehicles, and advanced defense systems—relies fundamentally on the power and efficiency of semiconductor chips, a global race has emerged that is not only redefining the boundaries of computing performance but also reshaping geopolitical strategies, economic priorities, and the future trajectory of technological dominance, as nations and corporations compete intensely to design, manufacture, and control the next generation of microprocessors that serve as the backbone of the digital world. Unlike earlier eras where software innovation dominated headlines, the current phase of technological advancement has brought hardware back into the spotlight, highlighting the critical importance of semiconductor manufacturing capabilities, advanced fabrication technologies, and supply chain resilience in ensuring sustained technological progress and national security. Leading companies such as those involved in chip design and fabrication are pushing the limits of miniaturization by developing processors at nanometer scales, enabling billions of transistors to be packed into a single chip, thereby significantly increasing computational power while reducing energy consumption, which is essential for supporting the growing demands of modern applications such as artificial intelligence training, real-time data processing, and high-performance computing.

The complexity of semiconductor production has turned it into one of the most sophisticated and resource-intensive processes in the world, requiring advanced equipment, specialized materials, and highly skilled expertise, with only a few organizations globally capable of manufacturing cutting-edge chips at the most advanced nodes. This concentration of capability has made the semiconductor industry a focal point of global competition, as countries invest heavily in domestic chip

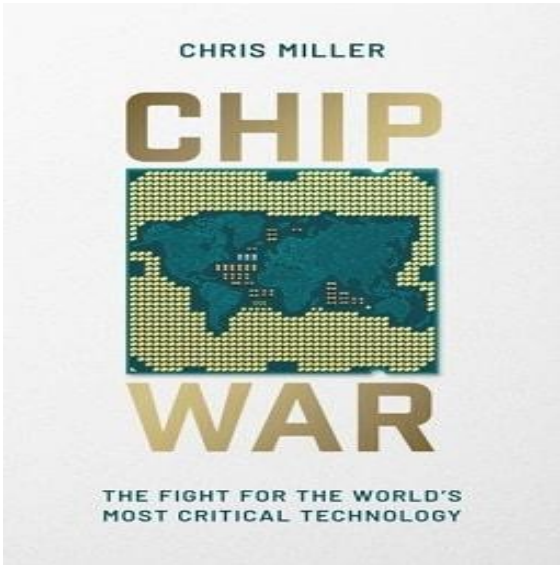
production to reduce dependency on foreign supply chains and ensure technological sovereignty. Governments are introducing policies, funding programs, and strategic partnerships aimed at boosting local manufacturing capacity, while companies are expanding fabrication facilities and investing in research and development to maintain their competitive edge in an industry where even a slight technological advantage can have significant implications.



At the same time, the demand for semiconductors is being driven by the rapid expansion of emerging technologies across multiple domains, including artificial intelligence, where specialized AI chips are designed to accelerate machine learning workloads, automotive industries where advanced driver-assistance systems and autonomous vehicles rely on high-performance processors, and consumer electronics where devices are becoming increasingly powerful and feature-rich. The rise of edge computing and the Internet of Things is further amplifying this demand, as billions of connected devices require efficient and low-power chips to operate effectively in distributed environments. This surge in

demand has exposed vulnerabilities in global supply chains, as disruptions caused by geopolitical tensions, natural events, and economic factors have led to shortages that impact industries worldwide, highlighting the need for more resilient and diversified production strategies.

Innovation in semiconductor technology is also being driven by the exploration of new materials, architectures, and design approaches that go beyond traditional silicon-based systems, as researchers investigate alternatives such as quantum materials, photonic computing, and three-dimensional chip stacking to overcome the physical limitations of current technologies and continue the progression of computational performance. These advancements aim to address challenges related to heat dissipation, energy efficiency, and scalability, enabling the development of next-generation processors that can support increasingly complex and demanding applications. Additionally, the integration of artificial intelligence into chip design processes is enabling more efficient and optimized architectures, as machine learning algorithms are used to analyze design parameters and improve performance, further accelerating innovation in this field.



However, the semiconductor race is not without its challenges, as the high cost of research, development, and manufacturing creates significant barriers to entry, limiting

the number of players capable of competing at the highest level and raising concerns about market concentration and technological dependency. Environmental considerations also play a critical role, as semiconductor fabrication requires substantial energy and water resources, prompting the industry to explore more sustainable practices and technologies to reduce its ecological impact. Furthermore, the strategic importance of semiconductors has introduced new dimensions of geopolitical tension, as countries seek to secure access to critical technologies and protect their interests in an increasingly competitive global landscape.

Looking toward the future, the outcome of this semiconductor race will have far-reaching implications for the development of technology across all sectors, influencing everything from the capabilities of artificial intelligence systems to the performance of everyday consumer devices and the advancement of scientific research. As innovation continues to push the boundaries of what is possible, the semiconductor industry will remain at the core of technological progress, serving as the foundation upon which the next generation of digital systems is built, and shaping the direction of global innovation in ways that extend far beyond the realm of computing itself.

# LEARN A TOOL

## VISUAL STUDIO CODE – THE DEVELOPER’S POWER EDITOR

### ◆ Introduction

In the rapidly evolving field of software development, having the right tool can significantly enhance productivity, efficiency, and code quality, and among the wide range of code editors available today, Visual Studio Code has established itself as one of the most powerful, lightweight, and versatile development environments that caters to beginners as well as professional developers by combining simplicity with advanced features in a highly customizable interface. Developed by Microsoft, Visual Studio Code, commonly known as VS Code, is a free, open-source code editor that supports multiple programming languages and provides a rich ecosystem of extensions, enabling developers to write, debug, and manage code efficiently across various platforms including web development, application development, and system programming.



### ◆ What is Visual Studio Code?

Visual Studio Code is a lightweight yet powerful source-code editor that supports syntax highlighting, intelligent code completion, debugging, version control integration, and extensibility through plugins, allowing developers to build and manage

software projects efficiently in a flexible and customizable environment.

### ◆ Key Features

1. **IntelliSense (Smart Code Completion)**  
Provides intelligent suggestions, auto-completion, and parameter hints while coding.
2. **Integrated Terminal**  
Allows execution of commands, scripts, and programs directly inside the editor.
3. **Extensions Marketplace**  
Thousands of extensions for languages like Python, Java, C++, Web Dev, etc.
4. **Built-in Git Integration**  
Manage version control, commits, branches without leaving the editor.
5. **Debugging Support**  
Run and debug code with breakpoints and real-time variable tracking.

### ◆ Getting Started – A Mini Lab

1. **Install VS Code**
  1. Download from official website
  2. Install and launch the editor
2. **Install Python Extension**
  1. Go to Extensions (Ctrl + Shift + X)
  2. Search “Python” → Install
3. **Create a New File**
  1. Click File → New File
  2. Save as hello.py
4. **Write Code**

```
print("Hello, IT Unlimited Magazine!")
```
5. **Right click** → Run Python File

## ◆ **Advanced Applications**

- **Web Development** → HTML, CSS, JavaScript projects
- **Data Science** → Python, Jupyter Notebooks
- **App Development** → React, Node.js
- **Cloud & DevOps** → Docker, Kubernetes extensions
- **AI/ML Coding** → TensorFlow, PyTorch integration



## ◆ **Why Use VS Code?**

Unlike heavy IDEs, Visual Studio Code provides a perfect balance between performance and functionality, making it suitable for both small scripts and large-scale applications while allowing developers to customize their environment according to their specific needs, thereby improving workflow efficiency and coding experience.

## ◆ **Conclusion**

Visual Studio Code is not just a code editor but a complete development ecosystem that empowers developers to build, test, and manage applications efficiently, making it an essential tool for anyone entering or advancing in the field of computer science and software development.

## REVIEW BOX

# ADOBE FIREFLY MOBILE – GENERATIVE AI IN YOUR POCKET

### ◆ Introduction

Adobe Firefly, long recognized as a powerful generative AI tool within desktop creative suites, has now evolved into a mobile-first experience, bringing advanced AI-driven creativity directly into the hands of users through its Android and iOS applications. Designed for designers, marketers, content creators, and even casual users, Firefly Mobile enables the generation of high-quality images, stylized text effects, and seamless photo edits within seconds, eliminating the need for high-end computing systems. Whether creating social media visuals on the move or refining images between meetings, the application delivers professional-grade results with minimal effort, positioning itself as a highly accessible and efficient creative solution in the modern digital workflow.



### ◆ What is Adobe Firefly Mobile?

Adobe Firefly Mobile is a standalone generative AI application optimized for smartphones, leveraging Adobe's proprietary Firefly models trained on licensed Adobe Stock and public domain datasets, ensuring that all generated outputs are ethically sourced and free from copyright conflicts. Unlike

browser-based or desktop-dependent tools, Firefly Mobile delivers a fully integrated creative experience directly on mobile devices, combining AI-powered generation with intuitive design controls.

### ◆ Core Features

#### **Text-to-Image Generation**

Users can generate high-quality, visually rich images simply by entering descriptive prompts such as “*mountain lake at dawn,*” producing detailed and realistic outputs within seconds.

#### **Generative Fill and Editing**

The application allows users to remove unwanted objects, extend backgrounds, or insert new elements into images by simply selecting areas, enabling powerful on-the-go photo editing without complex tools.

#### **Text Effects Transformation**

Plain text can be converted into visually engaging styles such as watercolor, chrome, neon, or artistic typography, enhancing creative expression for digital content.

#### **Creative Cloud Integration**

Projects can be seamlessly exported to Adobe Express, Photoshop, or Creative Cloud libraries, ensuring continuity between mobile and desktop workflows without loss of quality.

### ◆ User Interface & Experience

Firefly Mobile adopts a clean and intuitive interface inspired by Adobe Express, where a bottom-aligned prompt bar serves as the central control for content generation. Users

can easily switch between modes such as image generation, text effects, and editing tools through a simple navigation layout, while style presets and real-time preview capabilities allow iterative refinement before finalizing outputs. This minimalist design ensures that even complex AI functionalities remain accessible and user-friendly, keeping creativity at the forefront rather than overwhelming users with technical controls.

### ◆ Performance & Output Quality

The application demonstrates impressive performance by generating polished, photorealistic visuals within approximately 5–10 seconds, depending on complexity. It excels particularly in natural scenes, portraits, and product-style imagery, producing outputs with accurate lighting, coherent textures, and minimal visual artifacts. Advanced controls such as style intensity, lighting mood, and aspect ratio adjustments provide users with fine-grained control over the creative process, allowing for customization without requiring deep technical expertise.

### ◆ Ethical AI Advantage

One of the distinguishing features of Adobe Firefly Mobile is its commitment to ethical AI practices. Unlike many competing platforms, Firefly ensures that all generated content is derived from licensed or public datasets, reducing the risk of copyright infringement. Additionally, the inclusion of Content Credentials metadata enables transparency by tracking the origin, model usage, and generation details of each output, promoting responsible AI usage in creative workflows.

### ◆ Advantages

The platform offers a highly intuitive workflow with a minimal learning curve,

making it accessible to both beginners and professionals, while its real-time preview system and integrated editing tools significantly enhance productivity and creative flexibility. Its seamless integration with the Adobe ecosystem further strengthens its utility, allowing users to transition effortlessly between mobile and desktop environments.

### ◆ Limitations

Despite its strengths, Firefly Mobile operates on a credit-based system, which may limit usage for free-tier users, while certain advanced features remain locked behind subscription plans. Additionally, the platform currently lacks support for video generation and advanced multimedia capabilities, placing it behind competitors that offer broader content creation options. Complex or highly abstract prompts may also yield inconsistent results, indicating areas for future improvement.

### ◆ Use Cases

Firefly Mobile is particularly effective for social media managers creating engaging visual content under tight deadlines, digital marketers developing quick ad creatives, and designers prototyping concepts rapidly without requiring full-scale production tools. Its portability and efficiency make it an ideal companion for creative tasks in dynamic and time-constrained environments.

### ◆ Conclusion

Adobe Firefly Mobile represents a significant step forward in making generative AI accessible and practical for everyday use, combining powerful creative capabilities with a user-friendly mobile interface and a strong commitment to ethical AI practices.

 **MIND PUNCH**

1. I speak without a mouth and hear without ears. I have no body, but I come alive with wind. What am I?
2. What comes once in a minute, twice in a moment, but never in a thousand years?
3. If you rearrange the letters "CIFAIPC," you get the name of a famous IT term. What is it?
4. You have a 3-liter and a 5-liter jug. How will you measure exactly 4 liters?
5. What number replaces the question mark?  
2, 6, 7, 21, 22, 66, ?
6. I have keys but no locks, space but no room. You can enter, but you can't go outside. What am I?
7. If 5 machines take 5 minutes to make 5 products, how long will 100 machines take to make 100 products?
8. Which number is missing?  
1, 4, 9, 16, 25, ?
9. If you double a number and add 10, you get 50. What is the number?
10. A man looks at a picture and says, "Brothers and sisters I have none, but that man's father is my father's son." Who is in the picture?

## IT VITA

11. What is the full form of HTTP?
12. Which protocol is used to send emails?
13. What does RAM stand for?
14. Which data structure follows FIFO principle?
15. What is the default port number for HTTP?
16. Which programming language is known as the “mother of all languages”?
17. What is the main function of an operating system?
18. Which algorithm is used for searching in a sorted array efficiently?
19. What is the time complexity of binary search?
20. Which layer of the OSI model handles encryption?
21. What is a primary key in a database?
22. Which device connects multiple networks together?
23. What is the purpose of a firewall?
24. Which sorting algorithm is the fastest in average case?
25. What does URL stand for?



## ANSWERS



### Mind Punch Answers

1. Echo
2. The letter “M”
3. PACIFIC
4. Fill 5L → pour into 3L → empty 3L  
→ pour remaining 2L → fill 5L →  
pour into 3L → 4L remains
5. 67  
(Pattern:  $\times 3, +1, \times 3, +1\dots$ )
6. Keyboard
7. 5 minutes
8. 36
9. 20
10. His son

14. Quick Sort

15. Uniform Resource Locator

### IT Vita Answers

1. HyperText Transfer Protocol
2. SMTP (Simple Mail Transfer Protocol)
3. Random Access Memory
4. Queue
5. 80
6. C
7. Manages hardware and software resources
8. Binary Search
9.  $O(\log n)$
10. Presentation Layer
11. Unique identifier for a record
12. Router
13. To protect a network from unauthorized access

## FAMOUS AND FAVOURITES

### THE LEGACY OF ALAN TURING – THE FATHER OF MODERN COMPUTING

In the vast and rapidly evolving world of computer science, few individuals have left an impact as profound and far-reaching as Alan Turing, a visionary mathematician, logician, and cryptanalyst whose contributions laid the very foundation of modern computing and artificial intelligence, shaping the technological landscape that defines the present digital era. Born in 1912, Turing's work emerged at a time when computers, as we know them today, did not exist, yet his ideas transcended the limitations of his era and introduced concepts that would later become the core principles of computational theory and machine intelligence.

Beyond his theoretical achievements, Turing played a critical role during World War II as a key figure at Bletchley Park, where he led efforts to decipher encrypted messages generated by the German Enigma machine, a task considered nearly impossible at the time due to the complexity of the encryption system. Through the development of innovative techniques and electromechanical devices such as the Bombe, Turing and his team successfully broke the Enigma code, providing the Allied forces with crucial intelligence that significantly shortened the duration of the war and saved countless lives, demonstrating not only his intellectual brilliance but also the real-world impact of computational thinking in solving complex problems. This achievement highlighted the power of algorithmic logic and pattern recognition, principles that remain fundamental to modern cybersecurity, cryptography, and data analysis.

Turing's vision extended far beyond wartime cryptography, as he was among the first to explore the idea of machines capable of intelligent behavior, proposing what is now known as the Turing Test, a method for determining whether a machine can exhibit

human-like intelligence through conversation. This concept laid the groundwork for the field of artificial intelligence, raising philosophical and technical questions about the nature of intelligence, consciousness, and the relationship between humans and machines, questions that continue to drive research and debate in AI development today.



Despite his groundbreaking contributions, Turing's life was marked by significant personal challenges and societal injustice, as he faced persecution due to his sexuality, leading to tragic consequences that cut short his life at the age of 41. However, his legacy endures as a testament to the power of innovation, resilience, and intellectual curiosity, inspiring generations of scientists, engineers, and technologists to push the boundaries of what is possible. Today, Turing is widely recognized as the father of modern computing, and his work continues to influence advancements in areas such as machine learning, artificial intelligence, and computational theory, serving as a reminder that the ideas of one individual can shape the course of human progress.

# SENSE OF GRATITUDE

**THE EDITORIAL BOARD EXPRESSES ITS SINCERE GRATITUDE TO ALL THOSE WHO ARE RESPONSIBLE, EITHER BY BEING ON THE STAGE OR BEHIND THE SCREEN FOR THE SUCCESSFUL LAUNCH OF THE MAGAZINE**