



KONGU ARTS AND SCIENCE COLLEGE

(An Autonomous Institution, Affiliated to Bharathiar University, Coimbatore)

ERODE – 638 107

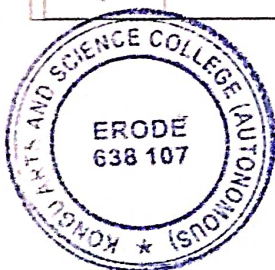
DEPARTMENT OF COMPUTER TECHNOLOGY AND INFORMATION TECHNOLOGY


20VCTCD – CORELDRAW – REPORT

Name of the Value Added Course	CORELDRAW
Course code	20VCTCD
Course Coordinator	Ms. DHARANI.V. Assistant Professor, Computer Technology and Information Technology
Date	Starting Date: 25.10.2021 Ending Date: 19.01.2022
Duration of the Course	40 Hours
Total participants Enrolled	109
Successfully Completed	85
Type of Assessment	Objective and Descriptive
Course Outcome	On Completion of this course the students will be able to <ul style="list-style-type: none">❖ Demonstrate the understanding of various tools to draw Images.❖ Relate objects with Colors and Bitmaps.❖ Apply text and various effects used in creation of Graphics Images.
Outcome Attainment	85 out of 85 Students scored above 60% of Marks

Feedback Question Analysis – Questions Asked

Q. No.	Parameters
Q1	The Course content was in line with my expectations
Q2	General content of the Course
Q3	The Course provided additional knowledge and skill
Q4	Well-designed Practical sessions
Q5	Schedule of the classes and other relevant details have been informed promptly
Q6	Course materials provided were useful
Q7	Provides scope for self-employment and fulfills the industrial needs




Dr. N. RAMAN
PRINCIPAL,
KONGU ARTS AND SCIENCE COLLEGE
(AUTONOMOUS)
NANJANAPURAM, ERODE - 638 107

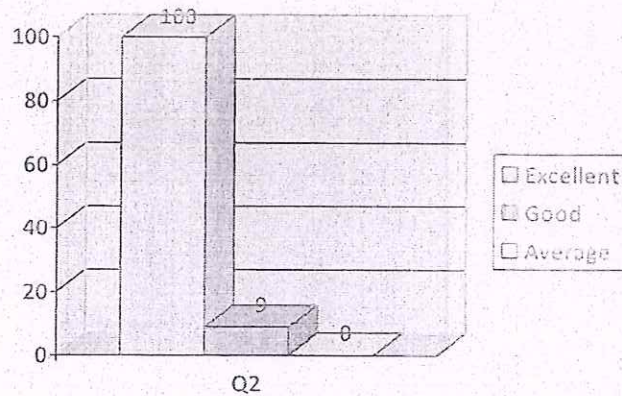
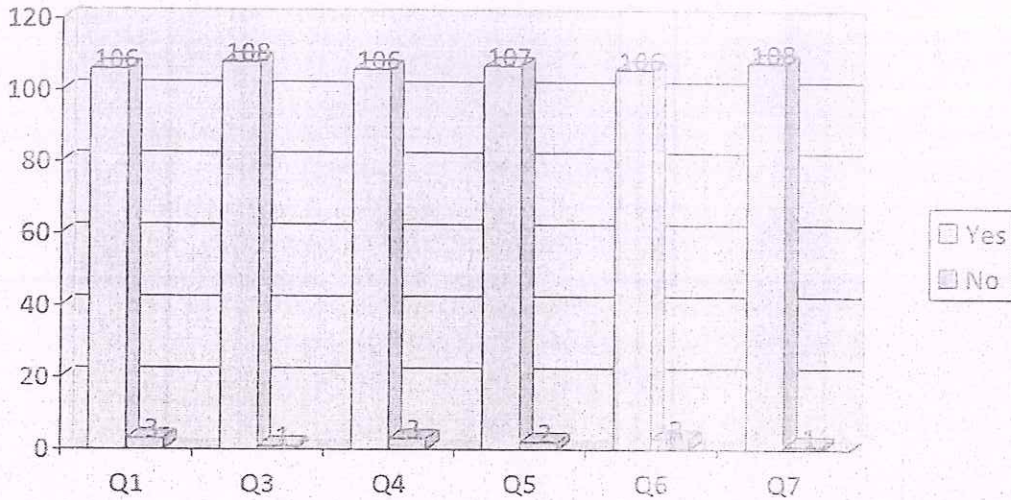


KONGU ARTS AND SCIENCE COLLEGE

(An Autonomous Institution, Affiliated to Bharathiar University, Coimbatore)

ERODE - 638 107

FEEDBACK RATINGS



V. Dhara
Course Coordinator



S. M. Arun
Head of the Department
Head of the Department,
Department of Computer Technology
and Information Technology,
Kongu Arts and Science College (Autonomous)
Erode - 638 107.

N. Ramani
Dr. N. RAMAN
PRINCIPAL,
KONGU ARTS AND SCIENCE COLLEGE
(AUTONOMOUS)
NANJANAPURAM, ERODE - 638 107.
KONGU ARTS AND SCIENCE COLLEGE
(AUTONOMOUS)
NANJANAPURAM, ERODE - 638 107.