



KONGU ARTS AND SCIENCE COLLEGE

(An Autonomous Institution, Affiliated to Bharathiar University,
Coimbatore)

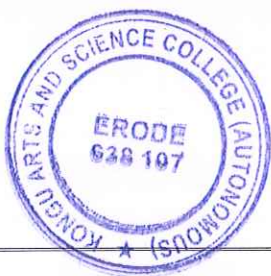
ERODE – 638 107

7.1.2 Alternate Sources of Energy and Energy Conservation Measures

The institution has provision for alternate sources of energy with the support of generating solar energy along with sensor-based energy conservation / power efficient equipment's and facilities. On the other side, the institution has installed the LED lights that ensure finest utilization of energy.

The following are the geotagged snap for alternate sources of energy and energy conservation measures initiated at the campus:

S.No	Facilities for alternate source of energy and energy conservation measures	Supporting Documents Page.No
1	Solar Energy	02-05
2	BioGas	06
3	Sensor based energy - Lights	07
4	LED Lights	08-09
5	Power efficient equipment	10



Dr. N. RAMAN
PRINCIPAL.
KONGU ARTS AND SCIENCE COLLEGE
(AUTONOMOUS)
NANJANAPURAM, ERODE - 638 107 Page 1 of 10



KONGU ARTS AND SCIENCE COLLEGE

(An Autonomous Institution, Affiliated to Bharathiar University, Coimbatore)

ERODE – 638 107

CRITERION VII: INSTITUTIONAL VALUES AND BEST PRACTICES

7.1.2 Alternate Sources of Energy and Energy Conservation Measures

Solar Energy

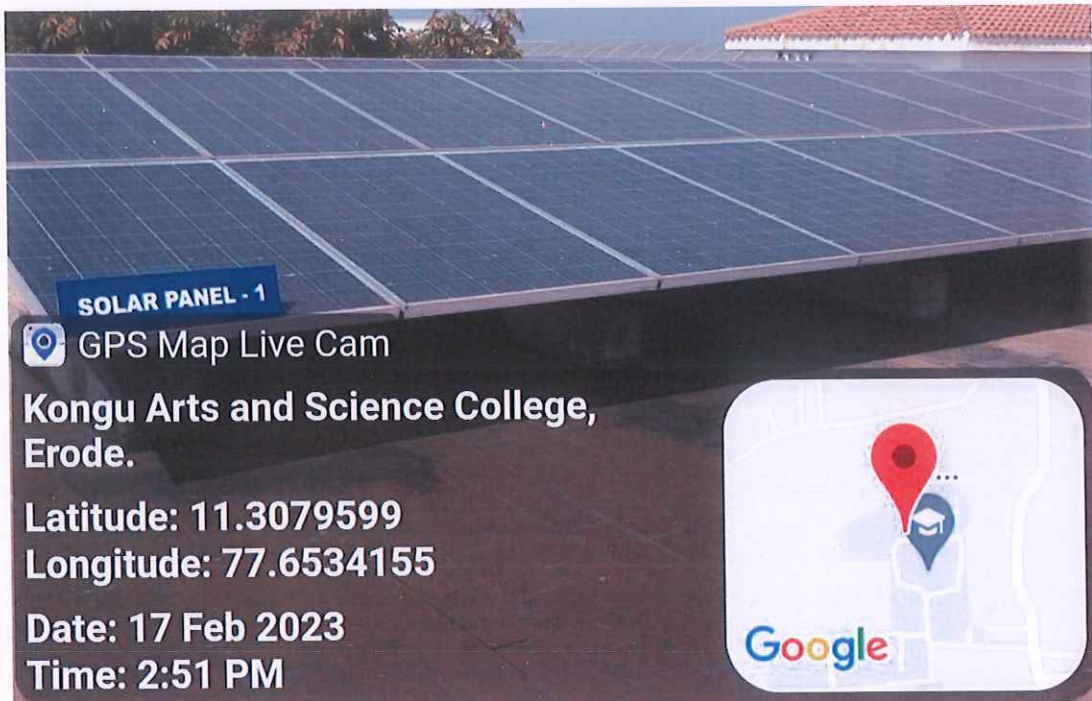


KONGU ARTS AND SCIENCE COLLEGE

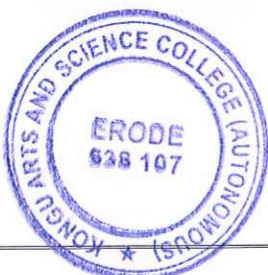
(An Autonomous Institution, Affiliated to Bharathiar University,
Coimbatore)

ERODE – 638 107

1. Solar Energy



Solar cell panel (1) installed on the terrace of Main Block



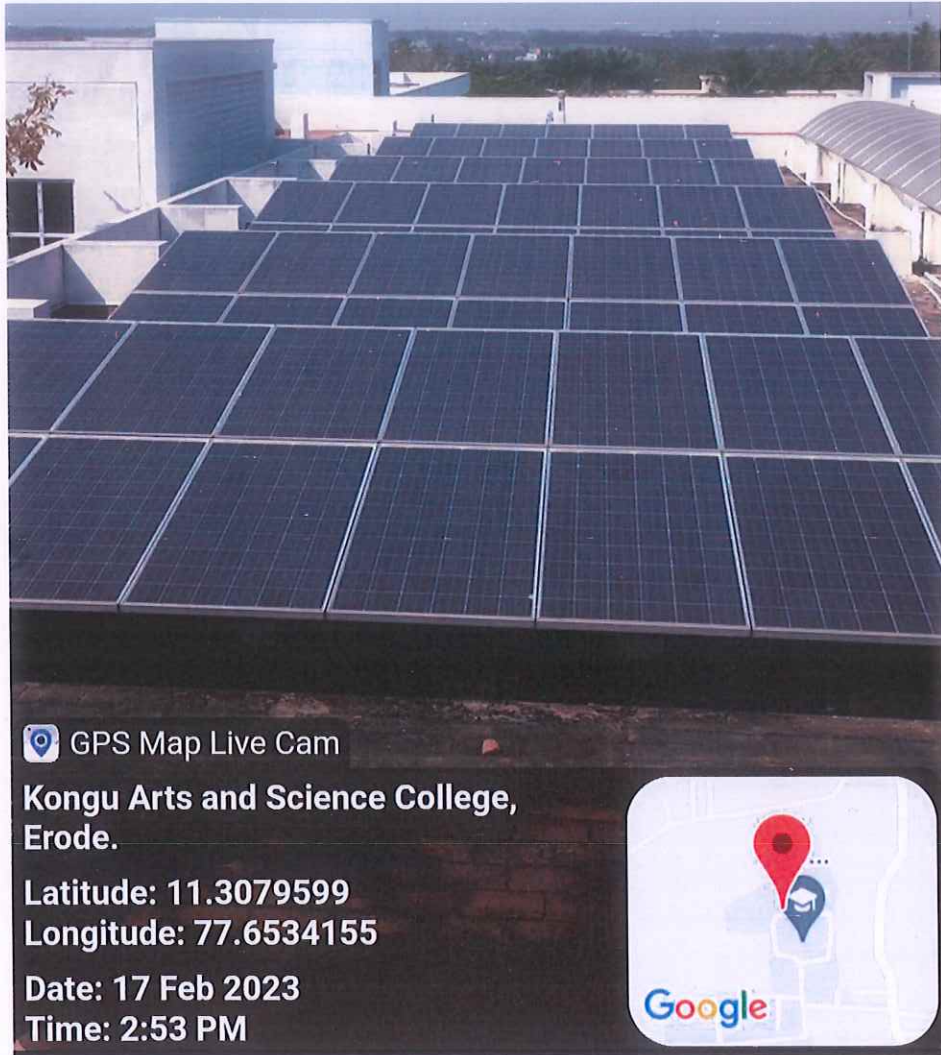
Dr. N. RAMAN
PRINCIPAL,
KONGU ARTS AND SCIENCE COLLEGE
(AUTONOMOUS)
NANJANAPURAM, ERODE - 638 107



KONGU ARTS AND SCIENCE COLLEGE

(An Autonomous Institution, Affiliated to Bharathiar University,
Coimbatore)

ERODE – 638 107

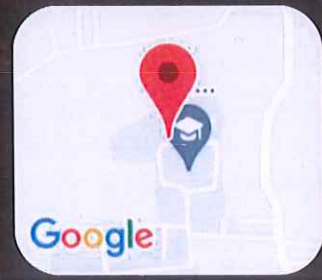


 GPS Map Live Cam

**Kongu Arts and Science College,
Erode.**


**Latitude: 11.3079599
Longitude: 77.6534155**

**Date: 17 Feb 2023
Time: 2:53 PM**



Solar cell panel 1(a) installed on the terrace of Main Block




Dr. N. RAMAN
PRINCIPAL,
KONGU ARTS AND SCIENCE COLLEGE
(AUTONOMOUS)
NANJANAPURAM, ERODE - 638 107



KONGU ARTS AND SCIENCE COLLEGE

(An Autonomous Institution, Affiliated to Bharathiar University,
Coimbatore)

ERODE – 638 107



GPS Map Live Cam

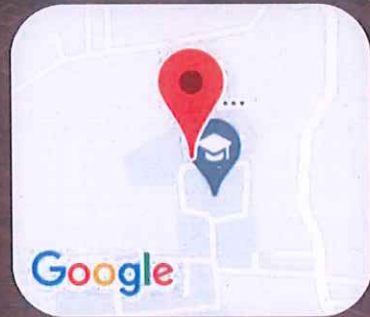
**Kongu Arts and Science College,
Erode.**

Latitude: 11.3079599

Longitude: 77.6534155

Date: 17 Feb 2023

Time: 3:03 PM



Solar cell panel 2 installed on the terrace of BCA Block



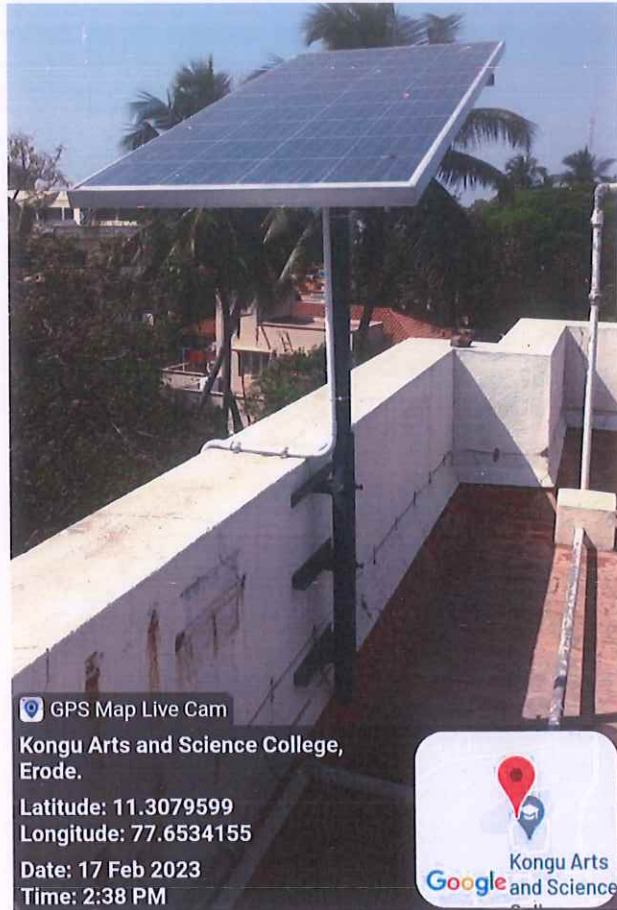
Dr. N. RAMAN
PRINCIPAL,
KONGU ARTS AND SCIENCE COLLEGE
(AUTONOMOUS)
NANJANAPURAM, ERODE - 638 107



KONGU ARTS AND SCIENCE COLLEGE

(An Autonomous Institution, Affiliated to Bharathiar University,
Coimbatore)

ERODE – 638 107



Solar cell panel installed on the terrace of Staff Quarters



Dr. N. RAMAN
PRINCIPAL,
KONGU ARTS AND SCIENCE COLLEGE
(AUTONOMOUS)
NANJANAPURAM, ERODE - 638 107



KONGU ARTS AND SCIENCE COLLEGE

(An Autonomous Institution, Affiliated to Bharathiar University, Coimbatore)

ERODE – 638 107

CRITERION VII: INSTITUTIONAL VALUES AND BEST PRACTICES

7.1.2 Alternate Sources of Energy and Energy Conservation Measures

Biogas Plant

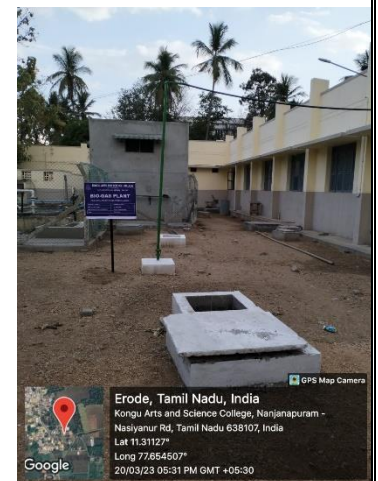
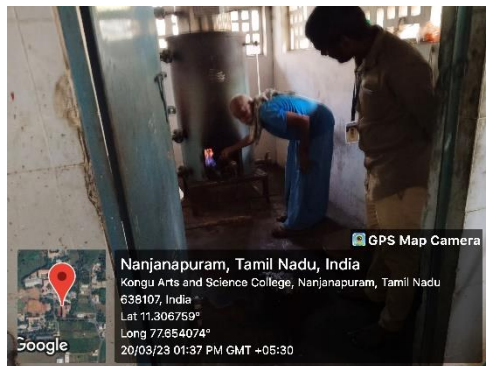


KONGU ARTS AND SCIENCE COLLEGE

(An Autonomous Institution, Affiliated to Bharathiar University, Coimbatore)

ERODE – 638 107

2. Bio Gas



Dr. N. RAMAN
DR. N. RAMAN
PRINCIPAL,
KONGU ARTS AND SCIENCE COLLEGE
(AUTONOMOUS)
NANJANAPURAM, ERODE - 638 107



KONGU ARTS AND SCIENCE COLLEGE

(An Autonomous Institution, Affiliated to Bharathiar University, Coimbatore)

ERODE – 638 107

CRITERION VII: INSTITUTIONAL VALUES AND BEST PRACTICES

7.1.2 Alternate Sources of Energy and Energy Conservation Measures

**Sensor-based Energy Conservation-Solar
Street Lights**

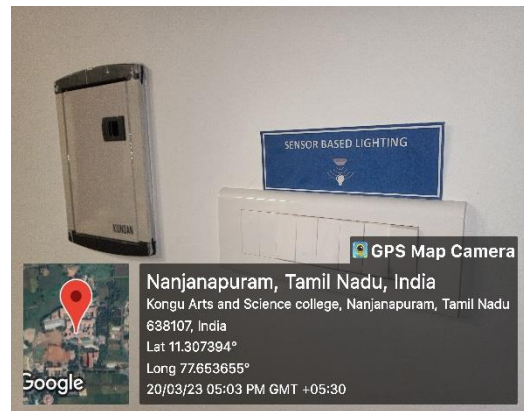
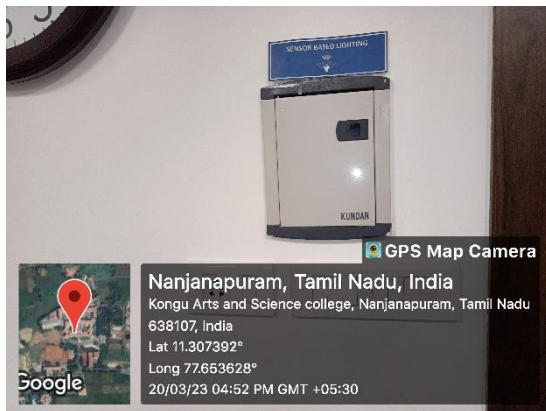
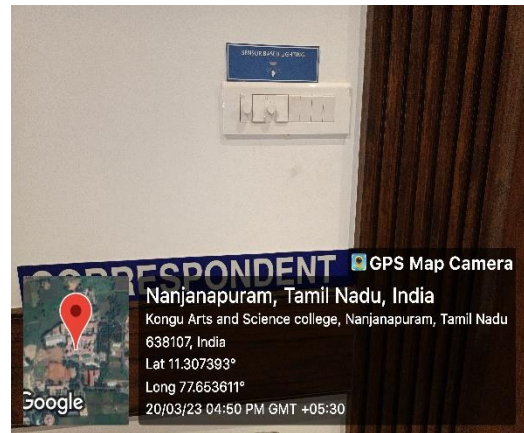
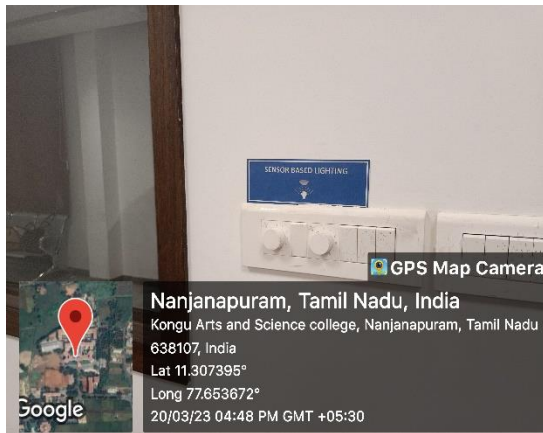


KONGU ARTS AND SCIENCE COLLEGE

(An Autonomous Institution, Affiliated to Bharathiar University, Coimbatore)

ERODE – 638 107

3. Sensor Based Energy - Lights



Dr. N. RAMAN
Dr. N. RAMAN
PRINCIPAL,
KONGU ARTS AND SCIENCE COLLEGE
(AUTONOMOUS)
NANJANAPURAM, ERODE - 638 107



KONGU ARTS AND SCIENCE COLLEGE

(An Autonomous Institution, Affiliated to Bharathiar University, Coimbatore)

ERODE – 638 107

CRITERION VII: INSTITUTIONAL VALUES AND BEST PRACTICES

7.1.2 Alternate Sources of Energy and Energy Conservation Measures

LED Lights

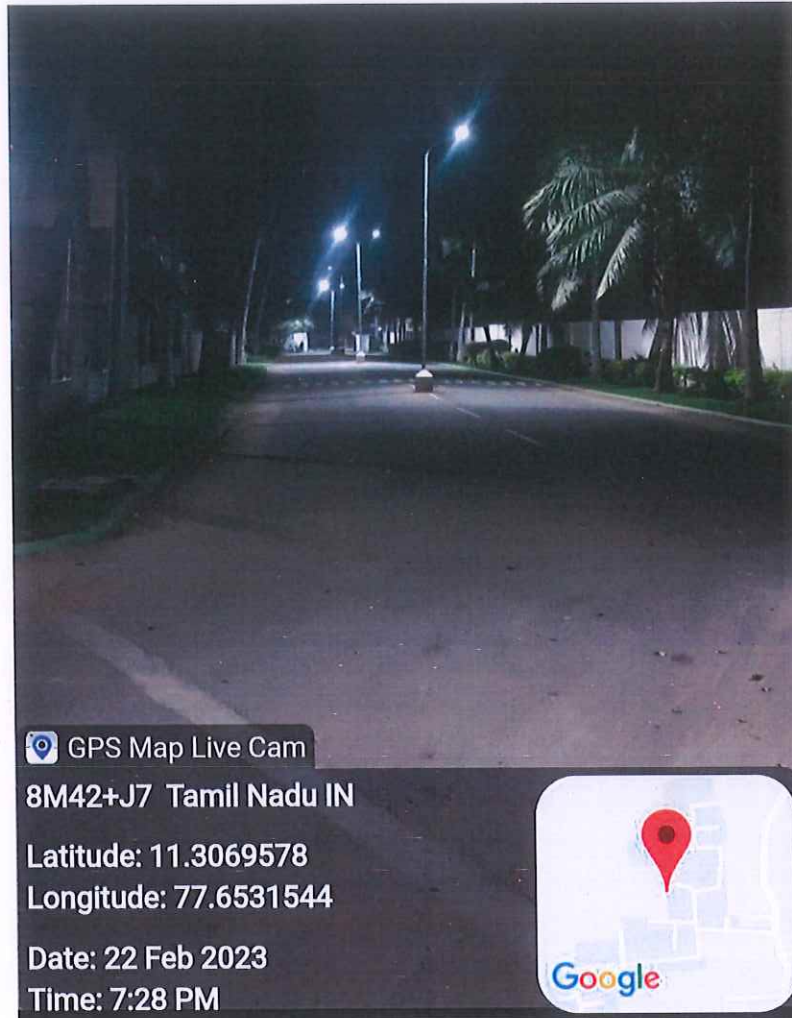


KONGU ARTS AND SCIENCE COLLEGE

(An Autonomous Institution, Affiliated to Bharathiar University,
Coimbatore)

ERODE – 638 107

4. LED Lights



GPS Map Live Cam

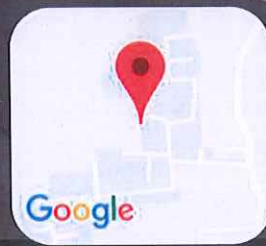
8M42+J7 Tamil Nadu IN

Latitude: 11.3069578

Longitude: 77.6531544

Date: 22 Feb 2023

Time: 7:28 PM



LED lights installed from Entrance till Main Block



Dr. N. RAMAN
Dr. N. RAMAN
PRINCIPAL,
KONGU ARTS AND SCIENCE COLLEGE
(AUTONOMOUS)
NANJANAPURAM, ERODE - 638 107



KONGU ARTS AND SCIENCE COLLEGE

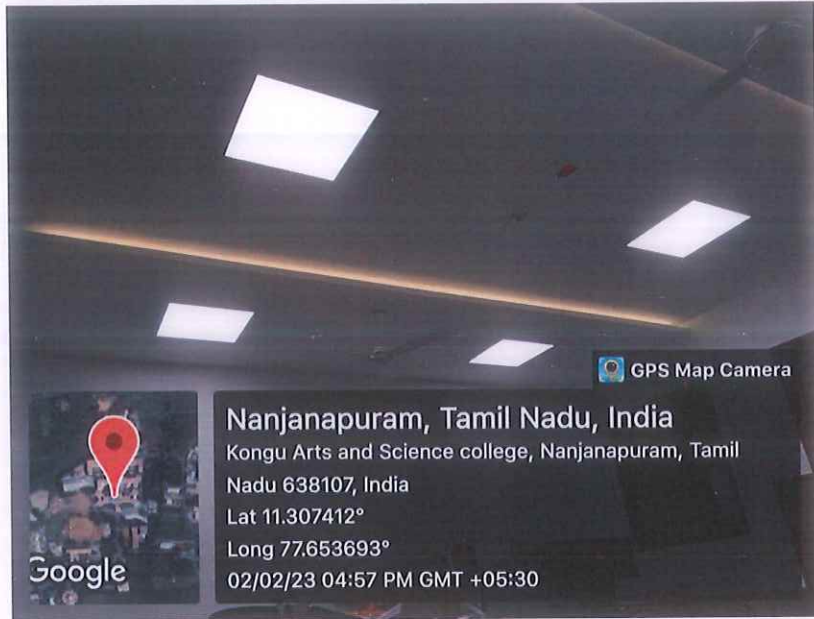
(An Autonomous Institution, Affiliated to Bharathiar University, Coimbatore)

ERODE – 638 107

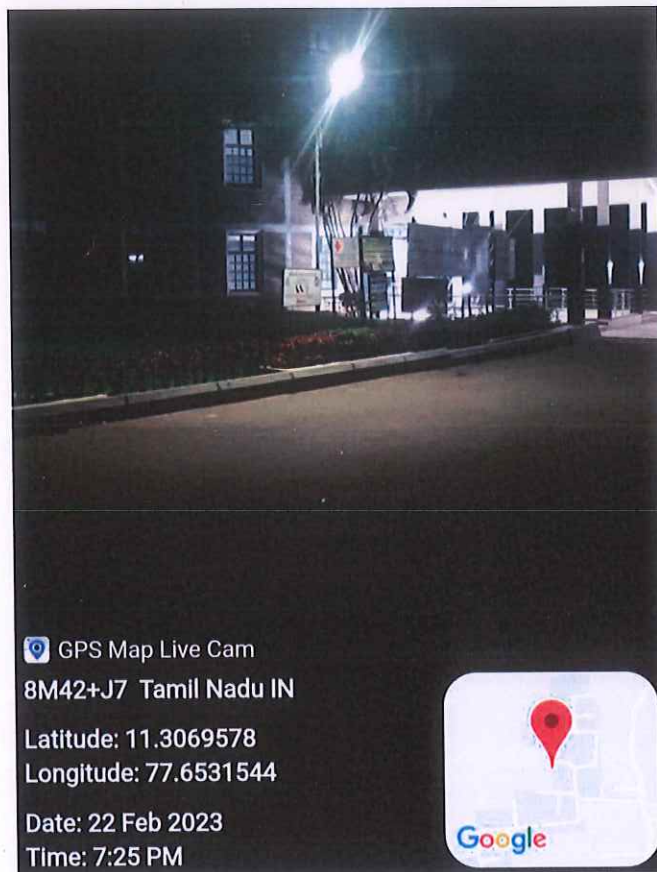
CRITERION VII: INSTITUTIONAL VALUES AND BEST PRACTICES

7.1.2 Alternate Sources of Energy and Energy Conservation Measures

**Power efficient Equipment -
Solar Water Heater**



LED lights installed in Main Block



LED Lights near Main Block



Dr. N. RAMAN
PRINCIPAL,
KONGU ARTS AND SCIENCE COLLEGE
(AUTONOMOUS)
NANJANAPURAM, ERODE - 638 107

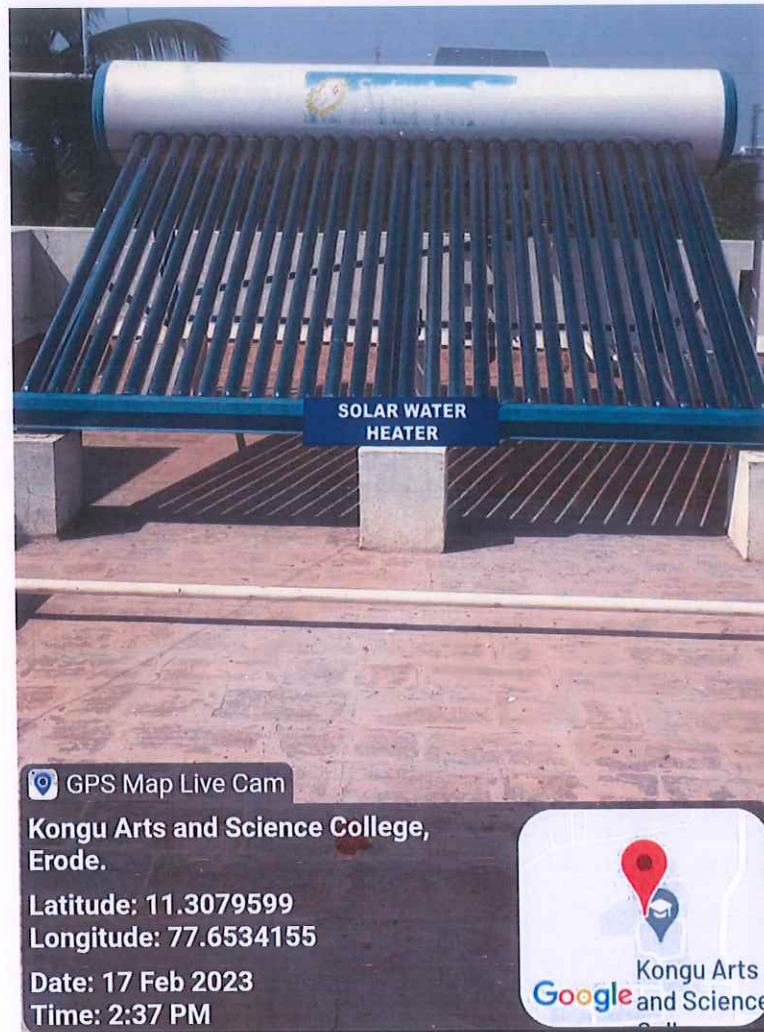


KONGU ARTS AND SCIENCE COLLEGE

(An Autonomous Institution, Affiliated to Bharathiar University,
Coimbatore)

ERODE – 638 107

5. Power Efficient Equipment



Power efficient Solar Water Heater on the terrace of Staff Quarters



Dr. N. RAMAN
PRINCIPAL
KONGU ARTS AND SCIENCE COLLEGE
(AUTONOMOUS)
NANJANAPURAM, ERODE - 638 107