



KONGU ARTS AND SCIENCE COLLEGE

ERODE - 638 107, TAMILNADU, INDIA.



Autonomous Institution	Affiliated to Bharathiar University	Approved by UGC & AICTE	Accredited by NAAC	DBT Star College Scheme	ISO 9001 : 2015 Certified Institution	Institution's Innovation Council
------------------------	-------------------------------------	-------------------------	--------------------	-------------------------	---------------------------------------	----------------------------------

Dr. N. RAMAN
Principal


7.1.2

The Institution has facilities for alternate sources of energy and energy conservation measures

- ✓ 1. Solar energy
- ✓ 2. Biogas plant
3. Wheeling to the Grid
- ✓ 4. Sensor-based energy conservation
- ✓ 5. Use of LED bulbs/ power efficient equipment

Response: A. 4 of the above




Dr. N. RAMAN
PRINCIPAL,
KONGU ARTS AND SCIENCE COLLEGE
(AUTONOMOUS)
NANJANAPURAM, ERODE - 638 107





KONGU ARTS AND SCIENCE COLLEGE

(An Autonomous Institution, Affiliated to Bharathiar University,
Coimbatore)

ERODE – 638 107

7.1.2 Alternate Sources of Energy and Energy Conservation Measures

The institution has provision for alternate sources of energy with the support of generating solar energy along with sensor-based energy conservation / power efficient equipment's and facilities. On the other side, the institution has installed the LED lights that ensure finest utilization of energy.

The following are the geotagged snap for alternate sources of energy and energy conservation measures initiated at the campus:

S.No	Facilities for alternate source of energy and energy conservation measures	Supporting Documents Page.No
1	Solar Energy	03-06
2	BioGas	08
3	Sensor based energy – Lights	10
4	LED Lights	12-13
5	Power efficient equipment	15

Solar Energy



KONGU ARTS AND SCIENCE COLLEGE

(An Autonomous Institution, Affiliated to Bharathiar University,
Coimbatore)

ERODE – 638 107

1. Solar Energy



Solar cell panel (1) installed on the terrace of Main Block




KONGU ARTS AND SCIENCE COLLEGE

(An Autonomous Institution, Affiliated to Bharathiar University,
Coimbatore)

ERODE – 638 107



 GPS Map Live Cam

**Kongu Arts and Science College,
Erode.**

Latitude: 11.3079599

Longitude: 77.6534155

Date: 17 Feb 2023

Time: 2:53 PM



Solar cell panel 1(a) installed on the terrace of Main Block



KONGU ARTS AND SCIENCE COLLEGE

(An Autonomous Institution, Affiliated to Bharathiar University,
Coimbatore)

ERODE – 638 107



GPS Map Live Cam

**Kongu Arts and Science College,
Erode.**

Latitude: 11.3079599

Longitude: 77.6534155

Date: 17 Feb 2023

Time: 3:03 PM



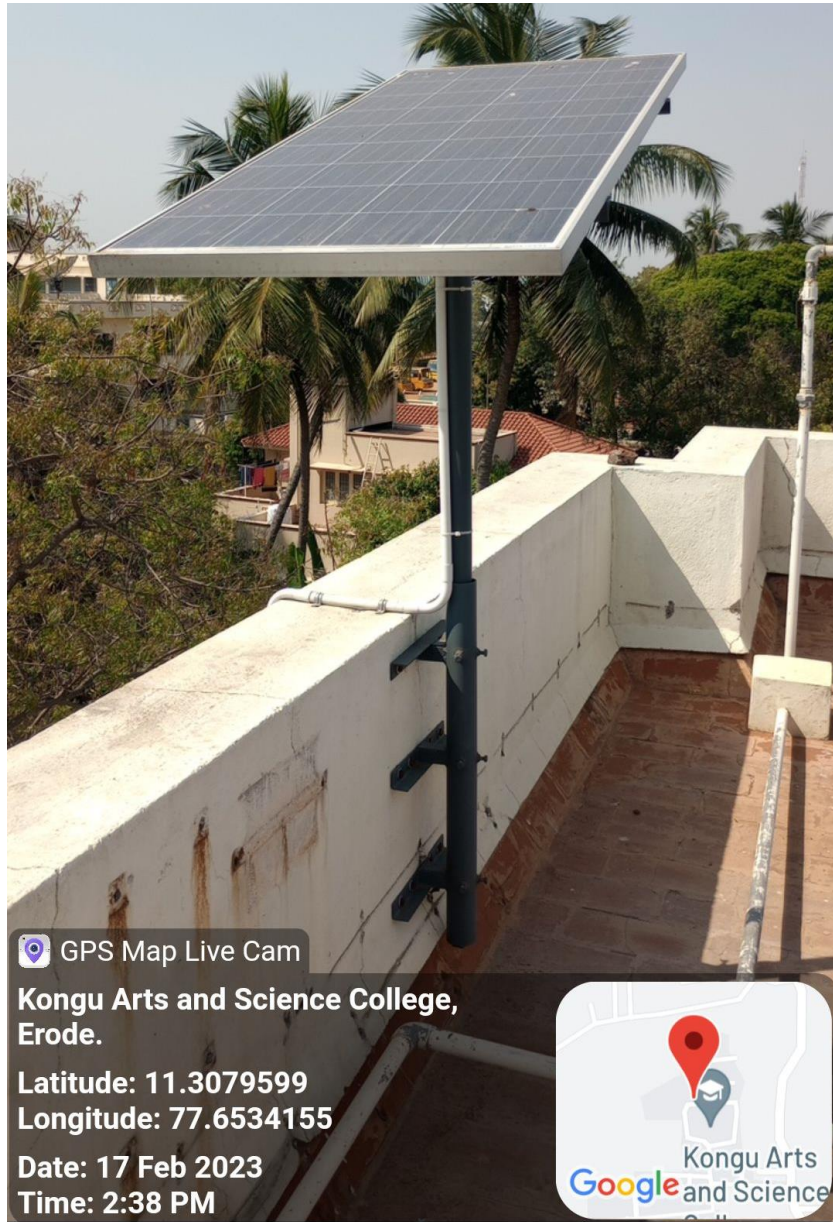
Solar cell panel 2 installed on the terrace of BCA Block



KONGU ARTS AND SCIENCE COLLEGE

(An Autonomous Institution, Affiliated to Bharathiar University,
Coimbatore)

ERODE – 638 107



Solar cell panel installed on the terrace of Staff Quarters

Biogas



KONGU ARTS AND SCIENCE COLLEGE

(An Autonomous Institution, Affiliated to Bharathiar University,
Coimbatore)

ERODE – 638 107

2. BioGas



GPS Map Live Cam
Kongu Arts and Science College,
Erode.
Latitude: 11.3079599
Longitude: 77.6534155
Date: 14 Mar 2023
Time: 3:00 PM



Biogas Plant near Mens' Hostel

Sensor Based Energy Conservation

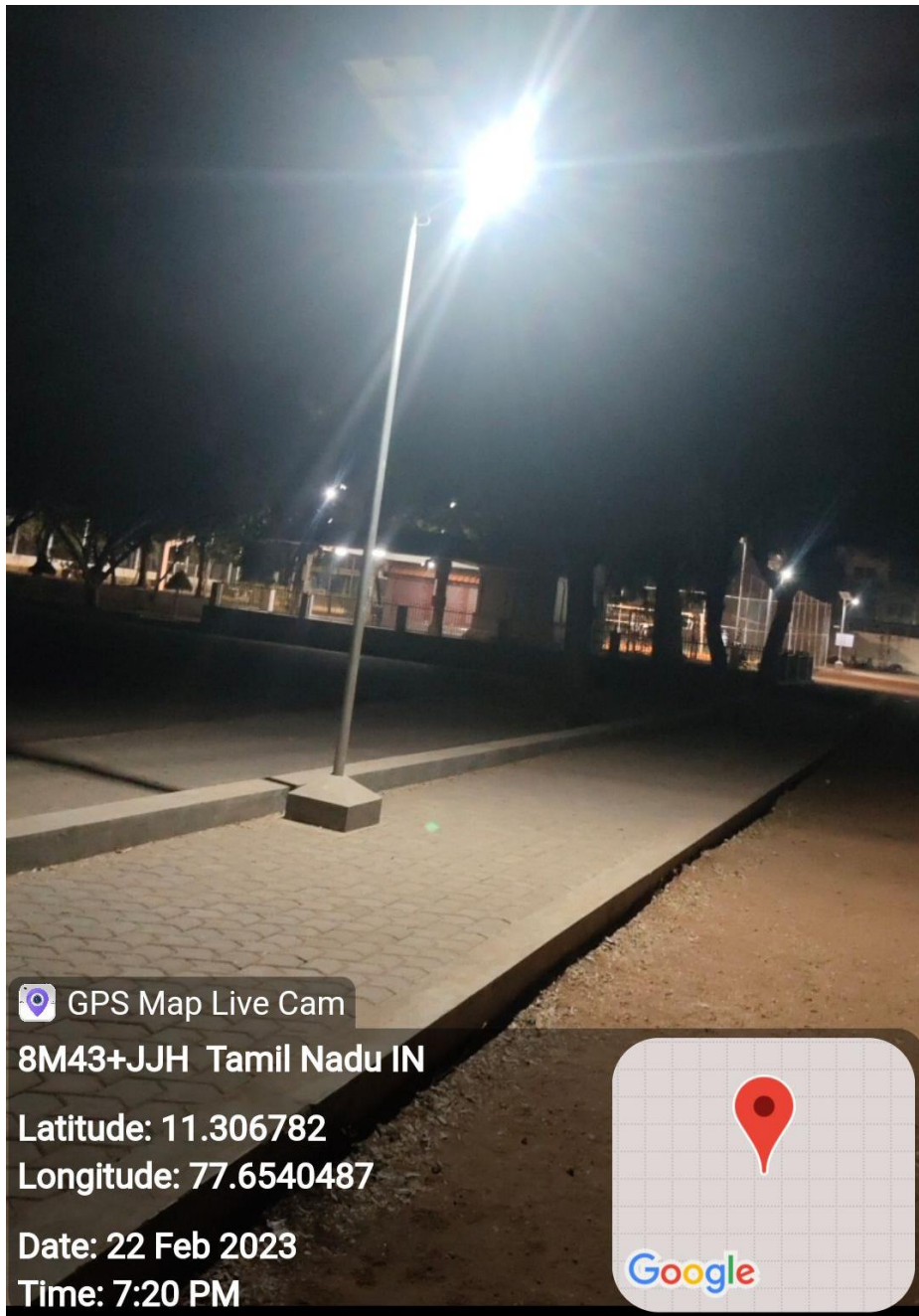


KONGU ARTS AND SCIENCE COLLEGE

(An Autonomous Institution, Affiliated to Bharathiar University,
Coimbatore)

ERODE – 638 107

3. Sensor Based Energy - Lights



GPS Map Live Cam
8M43+JJH Tamil Nadu IN
Latitude: 11.306782
Longitude: 77.6540487
Date: 22 Feb 2023
Time: 7:20 PM



Sensor Based Lights installed near bus parking

LED Lights

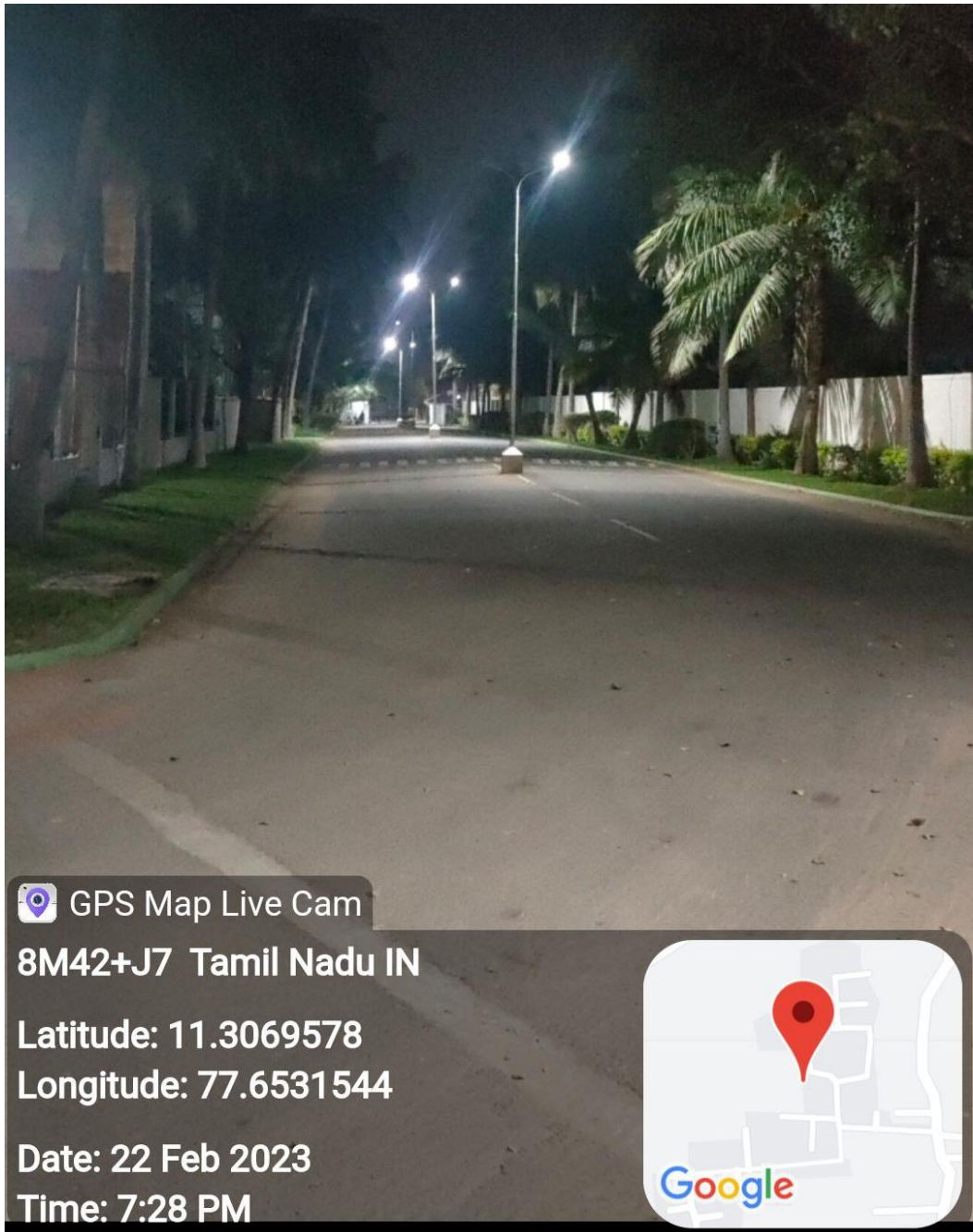


KONGU ARTS AND SCIENCE COLLEGE

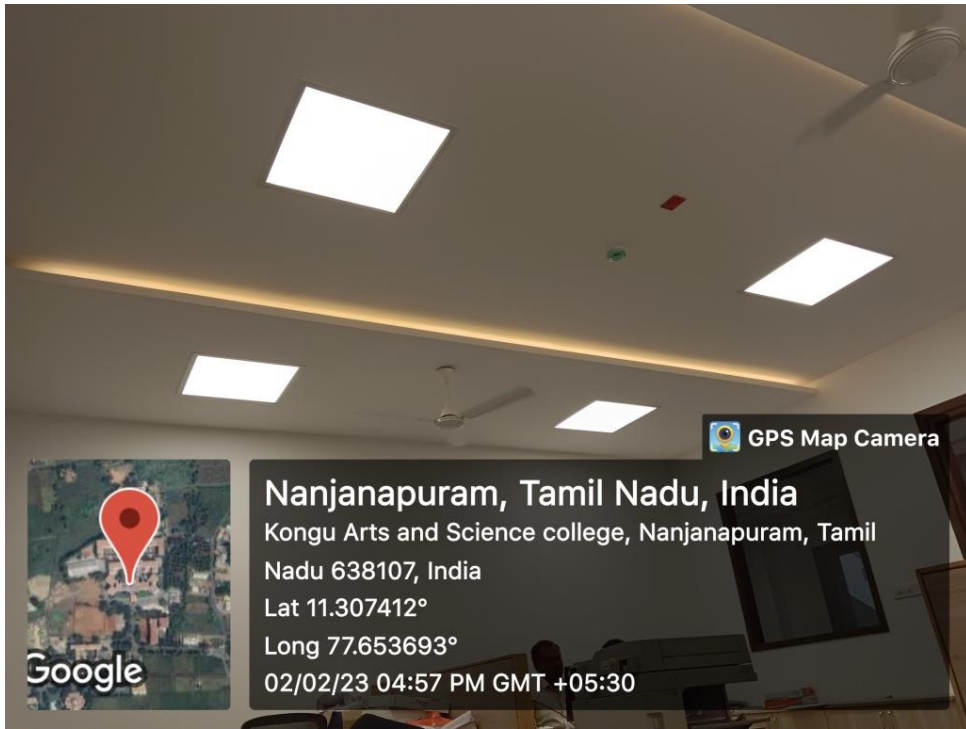
(An Autonomous Institution, Affiliated to Bharathiar University,
Coimbatore)

ERODE – 638 107

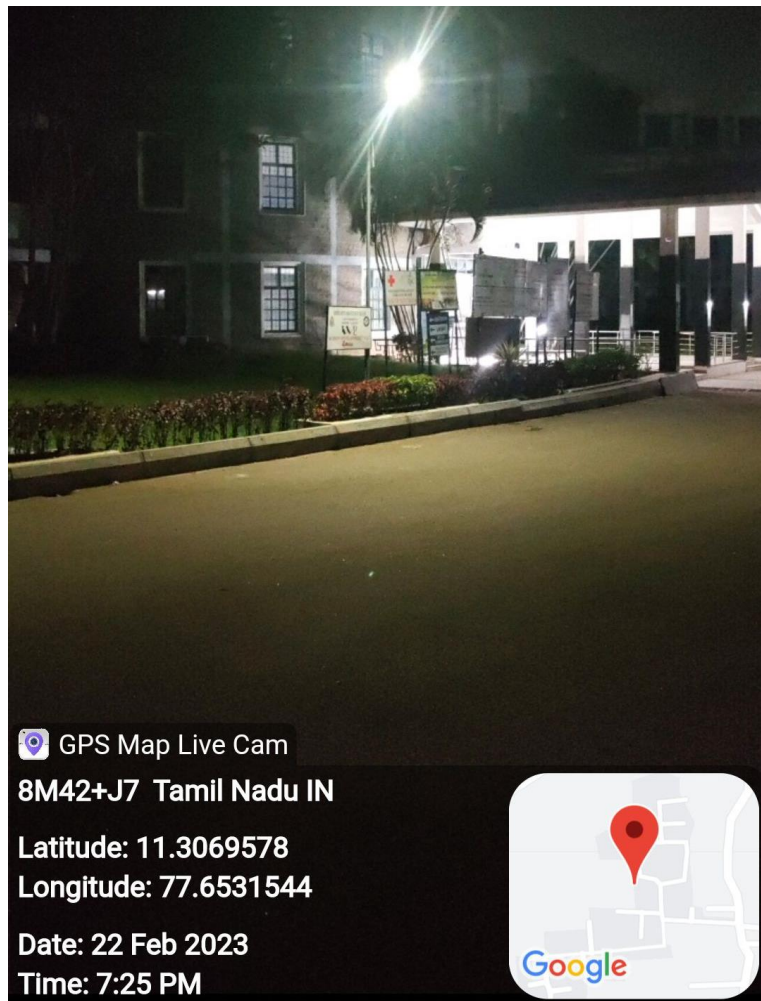
1. LED Lights



LED lights installed from Entrance till Main Block



LED lights installed in Main Block



LED Lights near Main Block

Power efficient Equipment

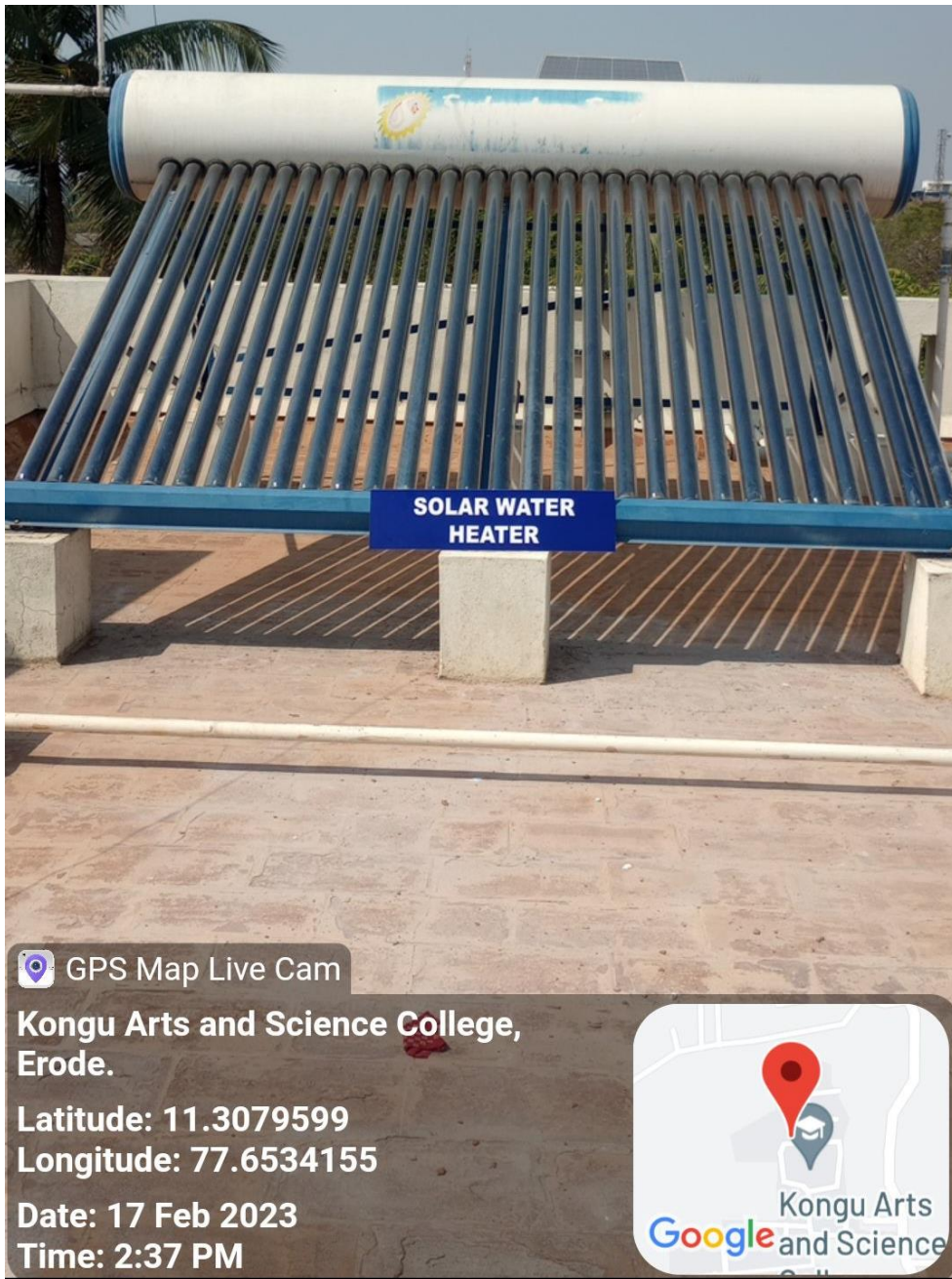


KONGU ARTS AND SCIENCE COLLEGE

(An Autonomous Institution, Affiliated to Bharathiar University,
Coimbatore)

ERODE – 638 107

2. Power Efficient Equipment



Power efficient Solar Water Heater on the terrace of Staff Quarters