



KONGU ARTS AND SCIENCE COLLEGE (AUTONOMOUS)

Affiliated to Bharathiar University, Coimbatore.

Approved by UGC & AICTE, New Delhi & Re-accredited by NAAC

(AN ISO 9001:2015 Certified Institution)

NANJANAPURAM, ERODE – 638 107.



INTERNAL QUALITY ASSURANCE CELL (IQAC)

PERSPECTIVE PLAN 2018 - 2023



KONGU ARTS AND SCIENCE COLLEGE (AUTONOMOUS), ERODE – 638 107.

Year of Establishment: 1994

Vision

To impart knowledge and skills to rural youth in order to meet their intellectual and social aspirations and cultural and technical needs of the society.

Mission

- To develop an effective curriculum and optimize institutionalized student activities
- To involve learners in practical life situations
- To expose students to rural realities
- To sensitize learners to National heritage and values

Objectives

- To mould the Rural youth as Self-reliant and Socially responsible Citizens
- To facilitate the learners to hone their leadership qualities
- To equip the learners with updated technological knowledge
- To enhance the research activities of the Rural youth and uplift them to serve the educational needs of the society

Quality Policy

- We are committed to instill Knowledge and Values to the students by providing quality education to meet the global challenges.
- This will be achieved by :
- Well framed Syllabus to satisfy the needs of learners and on par with the global standard and industry requirements
- Committed and Planned Teaching
- Continual Upgradation of the Facilities and Resources
- Effective implementation of the Quality Management System

PERSPECTIVE PLAN 2018 - 2023

1. CURRICULAR ASPECTS

- To introduce new Post Graduate and Under Graduate Programmes in various departments.
- To introduce new Value Added Courses.
- To introduce Certificate/Diploma/Advance Diploma Courses.
- To introduce additional clubs and forums to cater the various demand of the students.
- To conduct Academic Programmes through collaborative model.
- To establish structured online feedback system for continous development of curriculum.
- Incorporate NPTEL and SWAYAM COURSES into curriculum.
- To introduce Field Work / Project/ Internship.

2. TEACHING, LEARNING AND EVALUATION

- To establish smart class rooms.
- To Increase the Usage of ICT tools in teaching and learning.
- To increase the activities for Advance and Slow learners.
- To enhance student centric methods in their learning experiences.
- To appoint Faculty members with Ph.D. qualification and encourage the existing Faculty members to pursue Ph.D.
- To incorporate PO, PSO and CO in all the Programmes.
- To incorporate new LMS based on the necessity.
- To design strategies for identifying learning levels of students at entry level and design adequate programmes for them.

3. RESEARCH, CONSULTANCY AND EXTENSION

- To motivate and encourage Faculty members for availing research projects under various schemes among Arts, Commerce, Management and Science Streams.
 - To motivate faculty members to apply for patents.
 - To promote Inter-disciplinary research.
 - To promote publications in the indexed research journals.
 - To take up educational linkages in terms of MoU with premier Institutions.
 - To conduct more National level Seminar/ Conferences and Workshops.
 - To sign more MoUs for student exchange programmes.
 - To undertake various welfare programmes in the Institution/villages around the college.
 - To adopt more villages.
-

4. INFRASTRUCTURE

- To provide excellent Infra structure facilities and to create Eco-friendly ambience for learning.
- To increase the seating capacity of the reading hall of the library.
- To increase the number of computers with high configuration in various departments, office, laboratories and library.
- To renovate and upgrade department laboratories.
- To set up ICT facility laboratories.
- To construct additional seminar halls.
- To provide in-house Wi-Fi facilities.
- To upgrade need based softwares.
- To increase Internet bandwidth.
- To establish e-content development facilities.
- To improve Sports infrastructure facilities.

5. STUDENT SUPPORT AND PROGRESSION

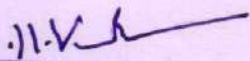
- To provide career enhanced opportunities and guidance for competitive examinations.
- To improve the programmes of the Entrepreneur Development Cell.
- To arrange for study tour/ field and industrial visit for all departments irrespective of their curricular needs.
- To formulate and implement different welfare and financial support schemes.
- To put in place the efficient student mentoring mechanism in all departments
- To organize University level sports meet in the College.
- To motivate the students to participate in International, National and University level games.
- To start 'Earn and Learn' scheme for students.
- To provide scholarship to meritorious students.
- To organize more skill development activities.
- To increase the placement of outgoing students.
- To increase the number of students for progression to higher education.
- To register the Alumni association.
- To strengthen the Student centric activities.
- To foster the democratic values, governance skills and leadership qualities by permitting student representation in academic and administrative bodies.
- To increase the contribution of Alumni in the campus for the development of the Institution.

6. GOVERNANCE, LEADERSHIP AND MANAGEMENT

- To create and maintain optimum number of Statutory and Non-statutory inhouse bodies to deal with wide range of day to day academic and administrative tasks.
- To motivate the Faculty members to attend more Faculty/Teacher training programmes for upgrading and updating their knowledge base.
- To institute a formal annual Performance Appraisal System for teaching and non teaching.
- To undertake quality assessments like NIRF Ranking and ISO Certification.
- To implement wide range of staff welfare schemes and programmes as per necessity.
- To device policies to improve the financial health of the institution.
- To improve e-governance in all the required areas.
- To provide financial support for the faculty members to attend Seminars / Conferences and Workshops.
- To conduct Internal and External audits at regular intervals like Academic audit and Administrative audit.

7. INSTITUTIONAL VALUES AND BEST PRACTICES

- To achieve 100% paperless administration and communication.
- To ensure hygienic, clean and green campus through various means at all times.
- To conduct Internal and External green audit, gender audit and energy audit.
- To implement various facilities for the disabled, a friendly and barrier free environment.
- To provide various facilities in the Institution for Waste Management System
- To achieve 100% plastic free campus.
- To take efforts in reducing different types of pollution in the campus.
- To focus on gender equity and in-house built gender sensitization programmes for the students.
- To generate academically, physically and spiritually sound environment with awareness on the importance of social responsibilities and national integration.


IQAC Co-ordinator
Kongu Arts and Science College
(Autonomous)
Nanjanapuram, Erode - 638 107.




PRINCIPAL,
KONGU ARTS AND SCIENCE COLLEGE
(AUTONOMOUS)
NANJANAPURAM, ERODE - 638 107.



KONGU ARTS AND SCIENCE COLLEGE

(AUTONOMOUS)

Affiliated to Bharathiar University, Coimbatore.

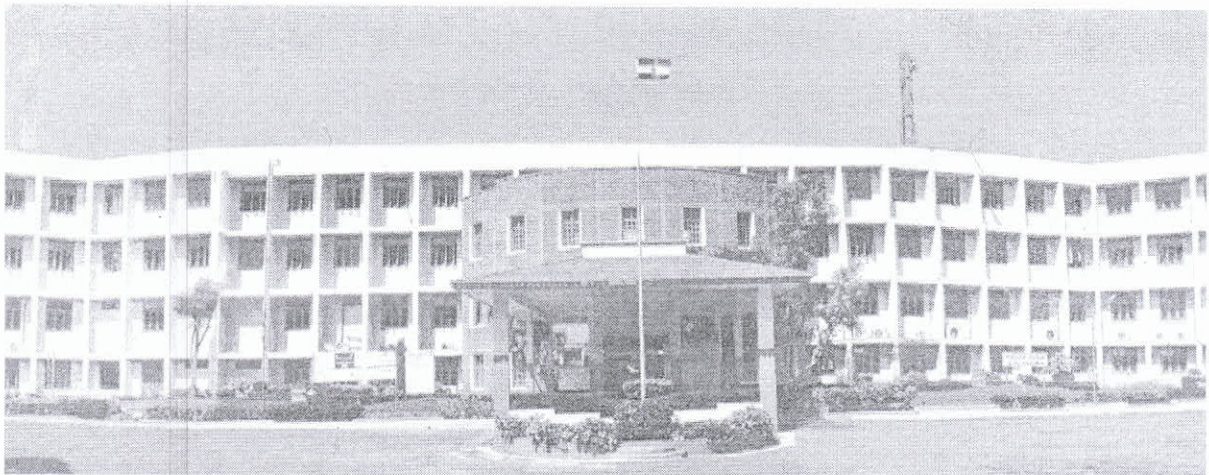
Approved by UGC & AICTE, New Delhi & Re-accredited by NAAC

(AN ISO 9001:2015 Certified Institution)

NANJANAPURAM, ERODE – 638 107.



DEPLOYMENT PLAN



KONGU
Assuring the Best



KONGU ARTS AND SCIENCE COLLEGE (AUTONOMOUS)

Affiliated to Bharathiar University, Coimbatore.

Approved by UGC & AICTE, New Delhi & Re-accredited by NAAC
(AN ISO 9001:2015 Certified Institution)

NANJANAPURAM, ERODE – 638 107.



STRATEGY DEPLOYMENT AND MONITORING

After approval of strategic development plan, the next step is its implementation. The strategy's progress should be evaluated on a regular basis during execution. As a result, the implementation document spells out the measurable success indicators explicitly. The strategic plan and its implementation will be overseen by the Principal.

Implementation at Institute Level

Governance & Administration	: Chairman & Members of Governing Body, Administrative Office
Statutory Compliance	: Principal, HODs, Coordinators
Curriculum Development	: Chairman and Members of Academic Council, Standing Committee on Academic Affairs, Board of Studies and Curriculum Development Cell
Students' Admissions	: Principal, HODs, Admission Committee
Teaching- Learning and Evaluation	: Principal, HODs , Faculty and CoE
Research & Development	: Principal and Research Cell
Infrastructure (Physical)	: Governing Body, KVIT Trust
Infrastructure (Academics)	: Principal, HODs
Students Development	: Principal, HODs and Tutors
Training & Placement	: Principal, Placement Officer & Coordinators of the departments
Departmental Activities	: HODs and Faculty
Quality Assurance	: IQAC team
Institutional Values and Best Practices	: Principal, HODs and Faculty

Measurable during Implementation

CRITERION I - Curricular Aspects	
Particulars	Units of Measurement
To introduce new post graduate and undergraduate programmes in various departments.	Number of New PG and UG Programmes introduced
To introduce new Value Added Courses	Number of New Value Added Courses introduced
To introduce Certificate/Diploma/Advance Diploma Courses	Number of Certificate/Diploma/Advance Diploma Courses introduced
To introduce additional clubs and forums to cater the various demand of the students	Number of additional clubs and forums introduced
To conduct Academic Programmes through collaborative model	Number of Academic Programmes conducted through collaborative model
To establish structured online feedback system for continuous development of curriculum	Framing of structured online feedback system for continuous development of curriculum
Incorporate NPTEL and SWAYAM Courses into curriculum	Number of NPTEL and SWAYAM Courses into curriculum
To introduce Field Work/Project/Internship	Number of Field Work/Project/Internship introduced in the curriculum
CRITERION II - Teaching, Learning and Evaluation	
To establish smart class rooms	Number of class rooms established
To increase the Usage of more ICT tools in teaching and learning	Number of ICT tools increased in teaching and learning
To increase the activities for Advance and Slow learners	Number of activities for Advance and Slow learners conducted
To enhance the student centric methods in their learning experiences	Number of student centric methods introduced

Particulars	Units of Measurement
To appoint faculty members with Ph.D. qualification and encourage the existing faculty members to pursue Ph.D.	Number of faculty members appointed with Ph.D. qualification and Number of existing faculty members pursuing Ph.D.
To incorporate PO, PSO and CO in all the Programmes	Curriculum development based on OBE model
To incorporate new LMS based on the necessity	Number of faculty members using Google Classroom
To design strategies for identifying learning levels of students at entry level and design adequate programmes for them.	Diagnosis test and Bridge Course
CRITERION III - Research, Consultancy and Extension	
To motivate and encourage faculty members for availing research projects under various schemes among Arts, Commerce, Management and Science Streams	Programmes through Funding Development cell
To motivate faculty members to apply for patents	Number of motivational programmes and patents applied
To promote inter-disciplinary research	Number of promotional programmes for inter-disciplinary
To promote publications in the indexed research journals	Number of Publications in UGC Care/Scopus/Web of Science
To take up educational linkages in terms of more MoU with premier institutions	Number of MoU with premier institutions
To conduct more National Level Seminar/Conferences and Workshops	National level Seminar/Conferences and Workshops organized
To sign more MoUs for student exchange programmes	MoUs for student exchange programmes
To undertake various welfare programmes in the institutions/ villages nearby the colleges	Various welfare programmes in the institutions/villages nearby the colleges
To adopt more villages	Villages adopted

CRITERION IV - Infrastructure	
To provide excellent infra structure facilities and to increase eco friendly ambience for learning	New infra structure facilities
To increase the seating capacity of the reading hall of the library	Seating capacity of the reading hall of the library
To increase the number of Computers with the high configuration in various departments, office, laboratories and library.	Number of Computers with the high configuration
To renovate and upgrade the department laboratories	Renovation and upgradation of the department laboratories
To set up ICT facility laboratory	ICT facility laboratory
To construct additional seminar halls	Number of seminar halls
To provide in-house Wifi facility	In-house Wifi facility
To upgrade the need based softwares	Upgradation of the need based softwares
To increase the internet bandwidth	Internet bandwidth
To establish e-content development facilities	e-content development facilities
To improve sports infra structure facilities	Sports infra structure facilities
CRITERION V - Infrastructure	
To provide career enhanced opportunities and guidance for competitive examination	Activities of Career Guidance and Counseling Cell & Training and Placement Cell
To improve the programmes of the entrepreneur development cell	Number of programmes of the entrepreneur development cell
To arrange for study tour/ field and industrial visit for all departments irrespective of their curricular needs.	Number of study tour/ field and industrial visit for all departments

Particulars	Units of Measurement
To formulate and implement different welfare and financial support schemes	Number of different welfare and financial support schemes
To put in place the efficient student mentoring mechanism in all the departments	Student mentoring through Tutorial System
To organize University level sport meets in the college	Number of University level sport meets in the college
To motivate the students to participate in International, National, University level games	Number of students' participation
To start earn and learn scheme for students	Number of students under the scheme
To provide scholarship to meritorious students	Number of scholarship to meritorious students
To organize more enhancement and skill development activities	Number of enhancement and skill development activities
To increase the placement of outgoing students	Number of students placed
To increase the number of students for progression to higher education	Number of students for progression to higher education
To register the Alumni association	Registration of the Alumni association
To strengthen the student centric activities	Student centric activities
To foster the democratic values, governance skills and leadership qualities by permitting student representation in academic and administrative bodies	Student representation in academic and administrative bodies
To increase the contribution of Alumni in the campus for the development of the Institution	Contribution of Alumni in the campus

CRITERION VI - Governance, Management and Leadership	
To create and maintain optimum number of statutory and non statutory in-house bodies to deal with wide range of day to day academic and administrative tasks	Statutory and Non-statutory in-house bodies
To motivate the faculty members to attend more faculty/teacher training programmes for upgrading and updating their knowledge base	Training programmes for upgrading and updatingr knowledge base
To institute a formal annual Performance Appraisal System for teaching and non teaching	Performance Appraisal System for teaching and non teaching
To undertake quality assessments like NIRF Ranking and ISO Certification.	NIRF Ranking and ISO Certification
To implement wide range of staff welfare schemes and programmes as per necessity	Staff Welfare Schemes and Programmes
To device policies to improve the financial health of the Institution.	Policies for the financial health of the Institution.
To improve e-governance in all the required areas.	e-governance in all the required areas.
To provide financial support for the faculty members to attend Seminars/Conferences and workshops.	Financial support for the faculty members to attend Seminars/Conferences and workshops.
To conduct internal and external audits at regular intervals like academic audit and administrative audit etc.	Conduction of internal and external audits at regular intervals
CRITERION VII - Institutional Values and Best Practices	
To achieve 100% paperless administration and communication	% of paperless administration and communication
To ensure hygienic clean and green campus through various means at all times	Hygienic clean and green campus through various means at all times
To conduct internal and external green audit, gender audit and energy audit.	Conduction of green audit, gender audit and energy audit.

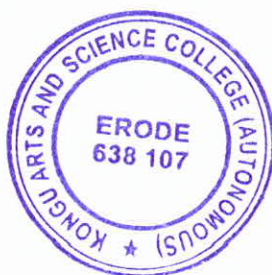
Particulars	Units of Measurement
To implement various facilities for the disabled, a friendly and barrier free environment	Facilities for the disabled
To provide various facilities in the institution for various Waste Management System	Facilities for Waste Management System
To achieve 100% plastic free Campus	% of plastic free Campus
To take efforts in reducing different types of pollution in the campus	Efforts taken in Reduction of different types of pollution in the campus
To focus on gender equity and in-house built gender sensitization programmes for the students.	Number of gender equity and in-house built gender sensitization programmes for the students.
To generate academically, physically, spirituality sound environment with awareness on the importance of social responsibilities and national integration.	Awareness Programmes on the importance of social responsibilities and national integration.

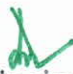
Monitoring of Strategic Plan

The Principal will examine the strategic plan's implementation on a regular basis to ensure that it is on track. The IQAC will be in charge of independently benchmarking quality standards, monitoring them and evaluating their attainment. The findings will be reported to the Principal by the IQAC. The Principal will identify corrective actions, the need for additional processes and resource deployment based on a thorough study of the outcomes and the IQAC report.


IQAC Coordinator

IQAC Co-ordinator
Kongu Arts and Science College
(Autonomous)
Nanjanapuram, Erode - 638 107.




Principal
PRINCIPAL,
KONGU ARTS AND SCIENCE COLLEGE
(AUTONOMOUS)
NANJANAPURAM, ERODE - 638 107.